

Your electrical panel can be a masterpiece using the Elesys's goods, developed to run in a simple and efficient form, a flawless work, resulting in better visual organization. Elesys is in continuous development and are alert by your costumers' needs.

Basically our products meet:

- 1) The identification of wires, cables, terminal blocks and internal/external eltrical electrical panel's components, industrial installations, substations and automation.
- 2) The creation and printing of the labels of safety warnings.
- 3) A wires' and cables' organization, inside the electrical panels.
- 4) A wires' and cables' instalation in building.

Products group

Group 1

The Thermomark identification system is used for the thermal identification of wires, cables and electrical components in general.

Thermomark system composed of:	Identification labels available for:		Components print
Thermal printer, can print 100 thousand 4x15 labels per hour.	The internal part panel's :	The external part panel's:	Heat shrink tube's print to identificate wires and cables.
Blank labels roller, to print.	Powered and unpowered wires and cables.	Control buttons and sinalizations lights.	
Thermal prin roller (Ribbon).	Devices (relays, contactors, etc.).	Identification plates, control sectors.	
Printing software, owned by Elesys.	Terminal blocks e field-wiring terminal blocks. Communication and warning notices.	Hard adhesive labels that replace the normal engraving plates	

Group 2

Group 3

Accessories to facilitate and simplify the organization and fixing of wires and cables inside the electrical panels.

Other products

Opening and closed wiring duct

Special wiring duct to acomodate wires on the floor or walls for site facilities.

Spirals

Manual identification for wires and cables.

Opening and closed braided mesh

Fixes cab

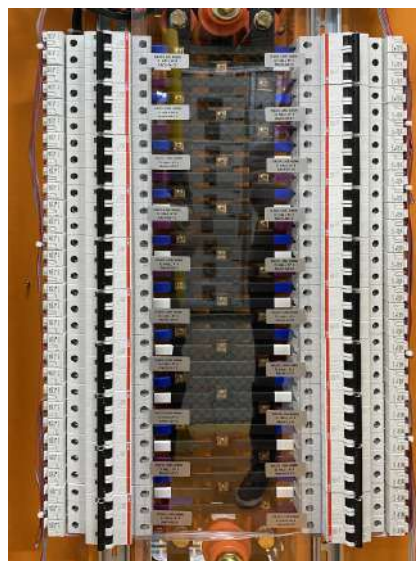
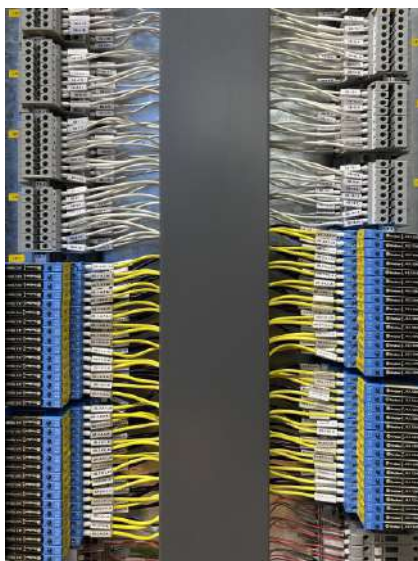
Elesys, since your origin in 1998, aims to improve your products, based in clients' demand, proposing economical and innovative practical solutions.

serving various segments, like:

- Eletronic;
- Panels assembly;
- Installers;
- Machines and equipment makers;
- Automation;
- Telecommunications (data centers and telecommunication towers);
- Traction (subway, railroad, urban mobility);
- Nautical;
- Aeronautics;
- Petrochemicals (plataform, refinery, chemical industry);
- Agribusiness (food industry, agricultural machines, transporte e silagem de grãos, sugarcane plant);
- Renewable energy plant (photovoltaic, wind, biomass, hydraulic).

We develop products in order to facilitate the assembly of panels, the maintenance and organization of electrical, hydraulic and pneumatic installations.

We count on immediate service and remote technical support, prioritizing our client's satisfaction.



Electrical dashboard's Internal identification

Wires and Cables		Page
Labels only	Adhesive label to roll up with protection EAE	15
	Adhesive label to roll up EEFZ	16
	Label with 2 holes to fit on wire or cable EFZD	18
Label and transparent suport (to fix the wire or cable)	4mm width label, with straight corners EFZ type with SLZ sleeve	12
	3,2mm width label, with straight corners EFZ MINI type with SLZ MINI sleeve	13

Cables only ≥ 20 mm \varnothing external		Page
Labels only	15x65mm or 15x85mm labels ECZ type with holes at the ends to fix the cable with nylon ties	20
Label and transparent sleeve (to fix the wire or cable)	09x20mm label EAZ type to insert on transparent suport SLE 209 type to fix on cable with nylon ties	14

Terminal Blocks		Page
Terminal Blocks	ABB Terminal blocks label EBZ	23
	Phoenix Terminal blocks label EBZ	25
	Wago Terminal blocks label EBZ	27
	Various Terminal blocks label EBZ	28
	Pole label EBZ	30

Devices		Page
Adhesive Labels	Various size rounded corner label ETA type	32
	Various size straight corner label EAZ type	33 and 34

Electrical panel's external identification

Panel name and information, definit controlled or protected sectors.		Page
Hard adhesive label in hard PVC. Substituting the olds acrylic labels with low relief printing	Various size rounded corner label ETA type	32
	Various size straight corner label EAZ type	33 and 34

Command Buttons and Signal Lights		Page
Command buttons and signal lights	Available the labels and correspondent suportes	23

Danger and Communication Signals		Page
External and internal dashboard's or painel's parts	Adhesive labels in circular, triangular, or arrow shapes.	35
	Continuous form for visual communication	35

Substation assembly services or electrical panels maintenance

Identify energized wires and cables		Page
Labels only	Adhesive labels to roll up EAE protection type.	15
	Adhesive labels to roll up EEFZ type.	16
	Transparent suport to fix on wires, PE Clip type.	17
Energized cables only ≥ 20 mm \varnothing external		Page
Labels only	15x65mm or 15x85mm labels ECZ type with holes at the ends to fix the cable with nylon ties.	20
Label and transparent support (to fix the label on the cable)	9x20 or 9x40 mm EAZ type label to be inserted in transparent support with holes in its ends to fix it to the cable, with nylon ties, protecting the printing.	20

750v cable measurements table

Nominal section mm ²	Outside diameter mm
0,5	2,1
0,75	2,3
1	2,5
1,5	2,9
2,5	3,5
4	4,0
6	6,3
10	10,7
16	16,0
25	25,3
35	34,0
50	49,0
70	65,5
95	87,5
120	111,5
150	136,0
185	169,0
240	224,0
300	283,0
400	389,0
500	485,0

Code table

Colors		Materials	
White	960	Flexible adhesive PVC	211
Gray	860	Hard PVC	100
Black	160	Hard adhesive PVC	101
Brown	130	Polyester	311
Pink	210		
Red	260		
Orange	360		
Yellow	460		
Light Green	520		
Green	560		
Dark Green	580		
Light Blue	620		
Blue	660		
Crystal	060		

Thermomark identification system	Page
Printer operation	06
BPE 300 Printer	07
Accessories BPE 300 Printer	08
Bp1200i Printer	09
Thermo Mark identification software	10
Wire label EFZ	12
Wire label EFZ-MINI	13
Transparent flexible sleeve SL	14
Adhesive label to roll up EAE	15
Wire label EEFZ	16
Clip support PE	17
Direct wire label EFZD	18
Thermoretractile tube TTR	19
Label / Supote cables	20
Cable Label ECZ	21
Push Button Support / Sinalizations lights PEBZ	22
ABB Terminal blocks label EBZ	23
Phoenix Terminal blocks label EBZ	25
Wago Terminal blocks label EBZ	27
Various Terminal blocks label EBZ	28
Pole label EBZ	30
Device label	31
Adhesive rounded corner label ETA	32
Adhesive straight corner label EAZ	33
Comunication Label ETA	35
Rail support TRA	36
Manual Identification	Page
Composable identificator UniMark	37
AM Identifier	38
UN and UNB Identifier	39
Profile	Page
Chanel DN	40
Floor conductor AP	42
Hole cover DIN	43
Chanel DINO	44
Organizer	Page
Spiral ES	45
Expandable braided sleeving MTE	46
Expandable braided split MTSC	47
Cable Fix FC	48

How does the thermal transfer print work?

In printhead exist a lot of resistives points that by heating transferer the resin of the ribbon to the polymeric film os the label. The image resolution printed by a 203 dpi printhead (dots per inch) correspond to 9 points by millimeter and in 300 dpi, 12 points by millimeter.

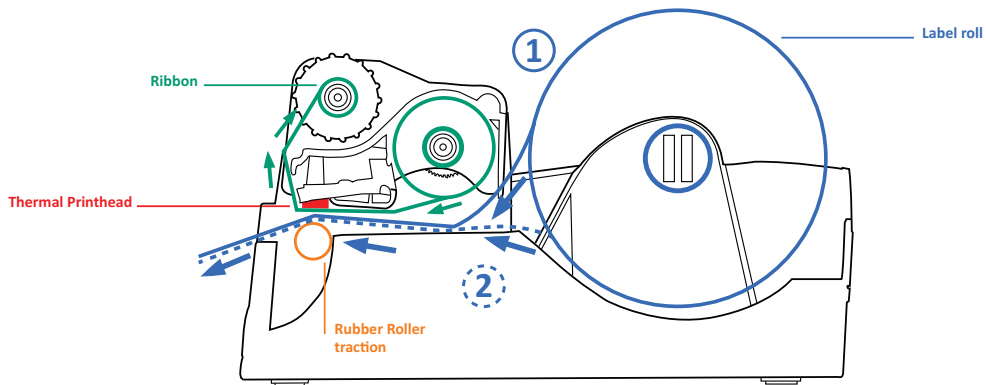


The dots are simultaneously printed one by one, the label is pulled by a rubber roller that is started by a step motor.

Differences between thermal transfer and direct thermal printing.

The direct transfer printer use a thermosensitivelabel and the printed midia goes out with low time of light exposition. The thermal transfer printer uses resin ribbon and the printed media becomes indelible and resistant to many solvents and friction.

Printer installation and operation diagram.



- 1 - The flexible labels are unrolled from above.
- 2 - The hard labels are unrolled from below.

Thermal transfer printer pros and cons.

Pros:

Thermal Transfer Printer

No toner or ink cartridge is required. Ribbon is more cost-effective compared to other printing methods.

The printer is compact and portable.

With a high design it is easy to take everywhere. Can be used in offices or factories.

High print definition and faster printing.

The identification labels are clear, spotless, and highly legible.

Cons:

A color at a Time.

To print in more than one color requires a reprint and ribbon change using the color selection in Thermo mark CODE.

Clean environment.

The printer must always be clean, because dust and residues can scratch the printhead.

The BPE300 printer is a portable thermal printer, light and compact, it can be used in factories or transported into the field

With Thermo Mark Software it becomes possible to identify a lot of terminal blocks, cables and electrical component labels.

Also prints heat shrinktube provided you use the corresponding accessories on page 09.



BPE300 - Technical specifications

Print Method:	Thermal Transfer
Resolution:	203 or 300 dpi
Processor:	32 Bit RISC CPU
Speed:	5 Inches per second or 100 thousand 4x15 EFZ labels per hour
RAM Memory:	16 MB
FLASH Memory:	8 MB
Communication:	USB, Serial, Ethernet (network cables) Wi-Fi* and bluetooth* (Wireless)
Software:	Thermo Mark – Edition label software.
Available Accessorie:	Automatic cutter ** External unwinder
Energy:	Automatic selection: 100-240 VAC. 50-60Hz
Operating Temperature:	5°C to 40°C
Dimensions:	Length: 25 cm Height: 16,5 cm Width: 19 cm
Weight:	1,9 Kg (without label and ribbon)
Others:	<ul style="list-style-type: none"> • Left label alignment (transmissive sensor on the left) • Audible Alert that helps the operator to quickly notice when labels or ribbon run out. • Features an exclusive 'C' button that helps calibrate your labels.

Box Content

	Description	Code
1 Un.	Thermo Mark Printer	BPE300
1 Un.	USB Cable	GDX USB
1 Un.	Power supply	GDX FE
1 Un.	Black Ribbon	RBZ 160
1 Un.	Protective cover	GDX CP
1 Un.	Cleaning pen	GDX CL
1 Un.	Print heada 203 dpi installed	GDX C 203

* Purchased separately

** Used for strip label or heat shrinktube

BPE300 Printhead	
Description	Code
BPE 300 Printhead - 203 dpi	GDX C 203
BPE 300 Printhead - 300 dpi	GDX C 300
Zebra Printhead - 203 dpi	GC C 203

BPE300 Ribbons			
Colors	Materials	Length	Code
Black	Resin	65m	RBZ 160
White	Resin	52m	RBZ 960
Dark Red	Resin	54m	RBZ 260
Light Red	Resin	54m	RBZ 250
Orange	Resin	52m	RBZ 360
Yellow	Resin	54m	RBZ 460
Green	Resin	52m	RBZ 560
Blue	Resin	52m	RBZ 660
Black (for retractable tube)	Resin	74m	RPE 160 TTR
Super Black	Super Resin	74m	RBZ 160 Super
Super White	Super Resin	74m	RBZ 960 Super

Accessories	
Description	Code
Cleaning pen for clean the printhead	GDX CL
Unwinder GDX for hard adhesive label print.	GDX DE
BPE 300 full cutter	GDX MC
Power supply- Similar to GDX BPE300	GDX FE
BPE 300 Wi-Fi module	GDX WI-FI
BPE 300 Bluetooth module	GDX BLUETOOTH

Case pinter	
Description	Code
Case for printer 13L, printer and cables only	Case PRO 1
Case for printer 28.4L, for printer and forms	Case PRO 2



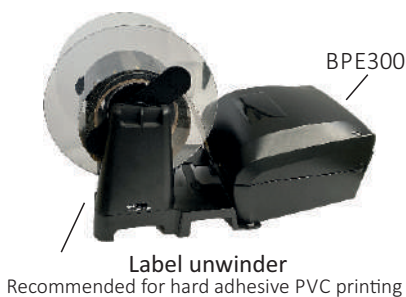
Printer with cutter.



Ribbon



Cleaning pen



Label unwinder
Recommended for hard adhesive PVC printing



Case for printer

BPB1200i is a robust thermal printer for high production, satisfy a variety of needs when it comes to identifying electrical components.

With Thermo Mark Software it becomes possible to identify a lot of terminal blocks, cables and electrical component labels.

Indicated for heat shrinktube printing with two options: full cut or semi cut (exclusive for this printer).



Printer with cutter

Bp1200i - Technical specifications

Print Method:	Thermal Transfer
Resolution:	203, 300 or 600 dpi
Processor:	32 Bit RISC CPU
Speed:	10 inches per second
RAM Memory:	32 MB
FLASH Memory:	128 MB
Communication:	USB, Serial, Ethernet (network cables) Wi-Fi and bluetooth (wireless)
Software:	Thermo Mark – edition label software
Available Accessorie:	Automatic cutter
Energy:	Automatic selection: 100-240 VAC. 50-60Hz
Operating Temperature:	5°C to 40°C
Dimensions:	Length: 47 cm Height: 30 cm Width: 27 cm
Weight:	13,6 Kg (without label an ribbon)
Others:	Touch display for configuration and printer information

Box Content

	Description	Code
1 Un.	Thermo Mark Printer	BP1200i
1 Un.	USB Cable	GDX USB
1 Un.	Power supply	GDX FE
1 Un.	Black Ø½" Ribbon	RBZ 160-300
1 Un.	Cleaning pen	GDX CL

Bp1200i Ribbons

Color	Materials	Meters	Code
Black Ø½"	Resin	300m	RBZ 160-300

Acessories

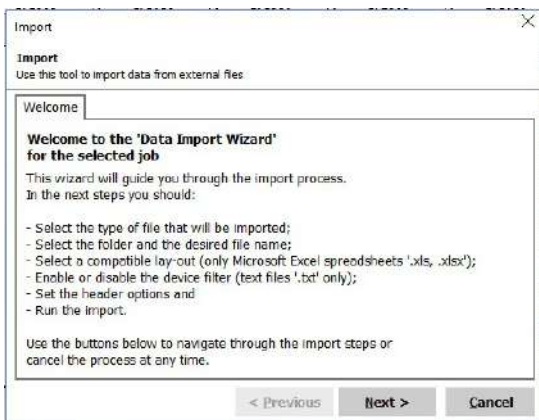
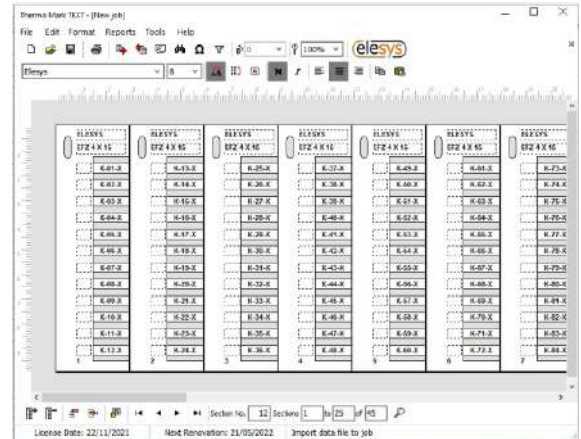
Decription	Code
Print head 203 dpi	GDX 1200 C 203
Bp1200i cutter (Full cut or semi cut, used for continuous cut labels or shrink tubes.)	GDX 1200 MC

The Thermo Mark application suite consists in Thermo Mark TEXT and Thermo Mark CODE, software developed by Elesys to facilitate the process of identifying electrical panels.

When acquiring the printer, the software will be made available free of charge to customers who maintain loyalty in purchasing supplies. The Thermo Mark can be configured in Portuguese, Spanish and English. Should you have any questions, we have more than 50 tutorial videos available, and our support is always ready to help you. mais robusto

Thermo Mark TEXT

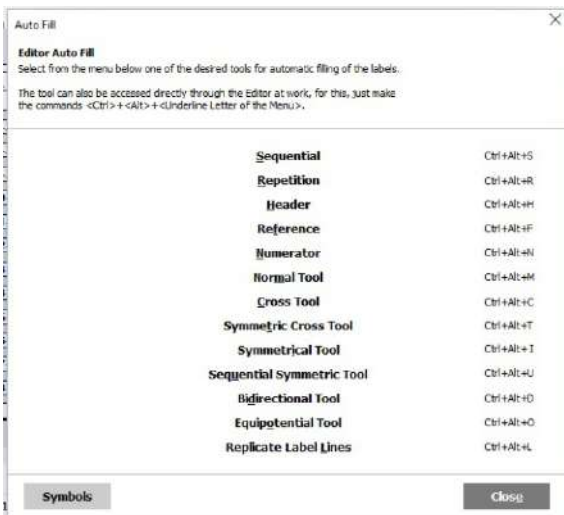
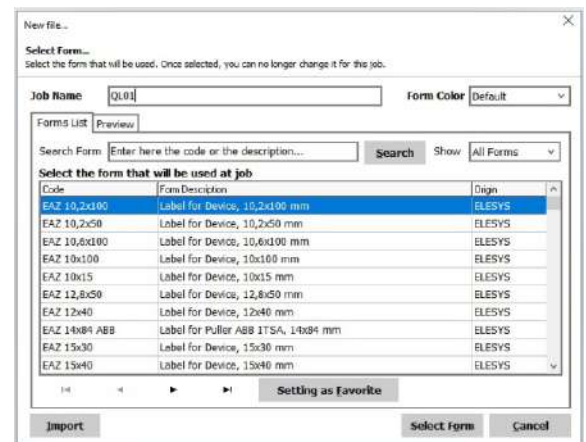
Intuitive and easy-to-use software, it has a database with pre-defined layouts, speeding up the identification of wires, cables and electrical components, printing texts exclusively, and:



- Storing jobs in file form so they can be organized in folders on the computer;
- Record the historic of all jobs done and assemble a list of favorite products so that they can be located quickest;
- Import files containing print data, compatible with XLSX from Excel and TXT from Notepad. Other formats on request;

• It has a set of tools that can be used for automatic label filling, with text generated in a sequence, repetition, cross-reference, symmetrical, normal, equipotential or other criteria pre-established by the user. Filling headers and references in each section of a job;

- Edit the text data using a table or the label itself, through the editor view, by clicking on the desired text;
- Allows the insertion of the most frequently used electrotechnical symbols;



- It applies custom formatting to each job, with the selection of font type, font size, and text alignment. Some labels allow rotation and insertion of up to three lines in a single label;
- Allow you to insert new sections, delete a section or a group of sections from a range, insert or remove text at any location, and after any of these changes, the software will relocate the rest of the text in the job.
- Allow the user not to have an excessive concern about the maximum amount of characters to type, because the software has a feature that automatically decreases the font size, so that the text exactly fits the size of the label;
- Recording the time spent doing a job and other production and control reports.

Thermo Mark Code

The Thermo Mark Code was created with the objective of allowing the identification of the equipment and panels with printing texts, images, barcodes, technical data, visual identification, and others.

With its configurable database, combined with the editing tools, it is possible to create and store customized label templates and print jobs according to the identification needs, and:

- Armazenar os trabalhos em forma de arquivo para que possam ser organizados em pastas no disco rígido do computador;
- Register the historic of all jobs done and build a list of favorite products so they can be located quickly;

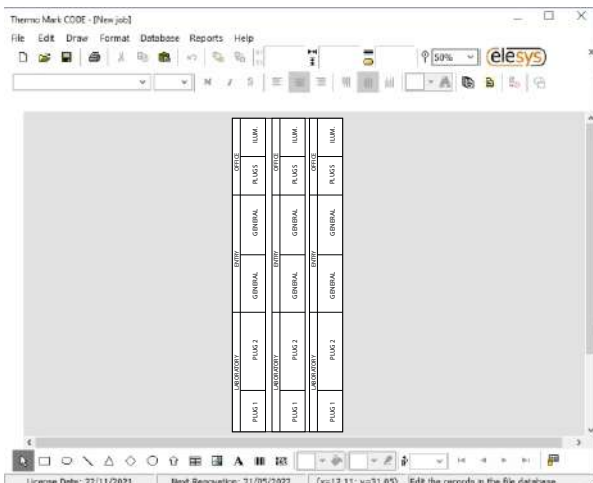
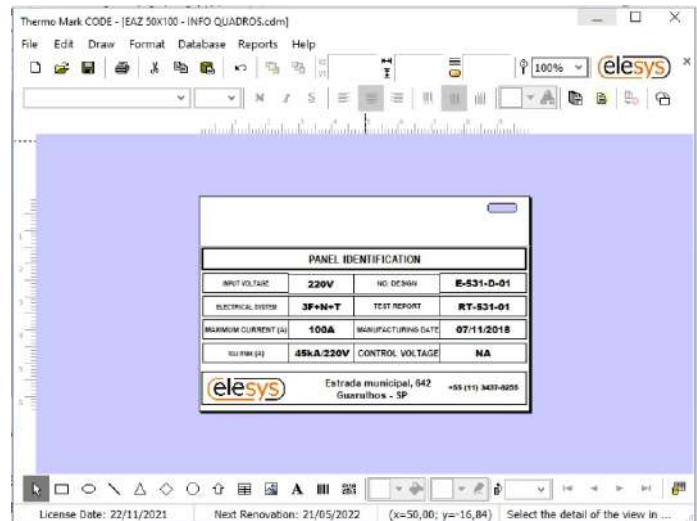


- Create custom formatting for each job, allowing select font type and size, align and rotate text and images, and insert multiple lines on a single label;
- Have a resource that automatically decreases the font size, so that the text is adjusted exactly to the size of the text box;
- Allow you to assemble custom labels using the editor objects: rectangle, ellipse to draw circles, triangles, arrows, lines to create divisions or image to insert logos, for example. In the text tool you can automatically insert current date and hour or numeric counters;
- Pin in favorites most used products;

- Convert the texts into linear barcodes or 2D barcodes. For linear barcodes dozens of different types are available including the most widely used, Code39, EAN and ITF (Interleaved 2 of 5). For 2D barcodes, you can work with square or rectangular DataMatrix, PDF 417 and QR Code.

- Store in an internal database, all the data that will be used. Later, you can associate the saved data with text boxes or barcodes used in the editor to be read and printed;

- Import text from comma-separated CSV-compatible files. This imported data is stored directly in the job database



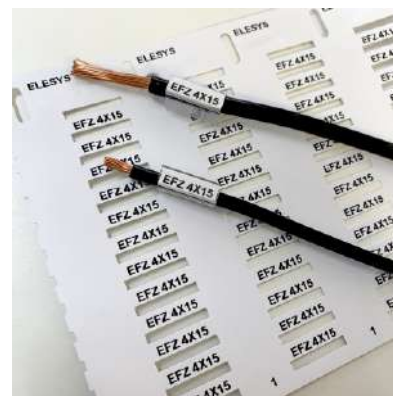
- Import the most popular image formats in addition to AutoCad DWG format drawings;
- Export the database information. This data can be used for editing outside the software and can be imported into other Thermo Mark code jobs or even other software.
- Having an object in the editor called "table" for creating multiple rows and columns, allowing for example, the creation of labels for the identification of circuit breakers or panels identifications.
- Make color prints on labels, using overprinting techniques and colorful ribbons. The software tools make the selection of objects and texts to be printed in each color.

EFZ labels are designed for wires and cables identification in electrical panels, Reduced Insertion Force design, due to narrowing at the ends. EFZ labels are printed on label rolls using the Thermo Mark system.

Suitable for PE Clip sleeve (Page 19) and SLZ sleeve (Page 16)

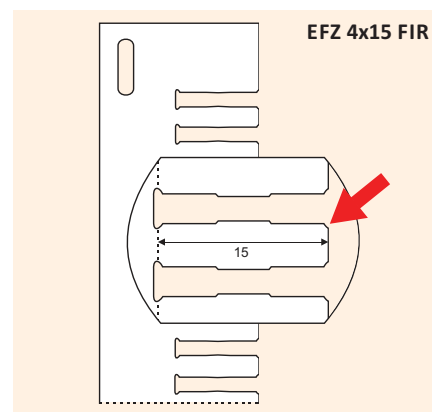
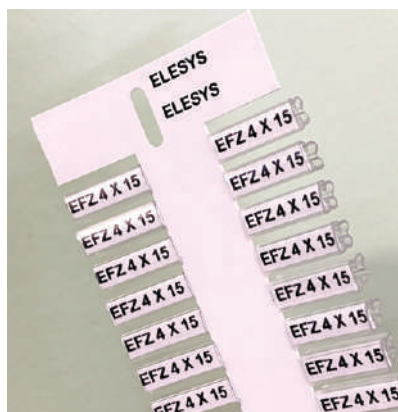
Technical specifications:

Material: Hard PVC
 Certificate: RoHS
 Self-extinguishing: UL94-V0
 Work temperature: -30°C to +70°C



Code	Wire Label	Pack
EFZ 4x10 __ 100	4x10 mm label for SLZ sleeve	10200 labels
EFZ 4x13,5 __ 100	4x13,5 mm label for SLZ sleeve	8400 labels
EFZ 4x15 __ 100	4x15 mm label for SLZ sleeve	8400 labels
EFZ 4x18 __ 100	4x18 mm label for SLZ sleeve	7200 labels
EFZ 4x23 __ 100	4x23 mm label for SLZ sleeve	6600 labels
EFZ 4x30 __ 100	4x23 mm label for SLZ sleeve	5520 labels
EFZ 4x12/18 __ 100	4x12/18 mm label for SLZ sleeve	5520 labels

Colors White (960) Grey (860) Black (160) Yellow (460) Example: EFZ 4x15 960 100

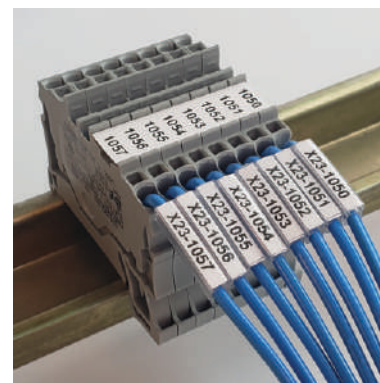


The 3.2 mm labels are designed for wires and cables identification in short places. Making it easy to organize and read the labels, like Wago terminal block TopJob 2001 (4,2mm)

To install these labels on the wire or cable, it's necessary to use a MINI glove.

Technical specifications:

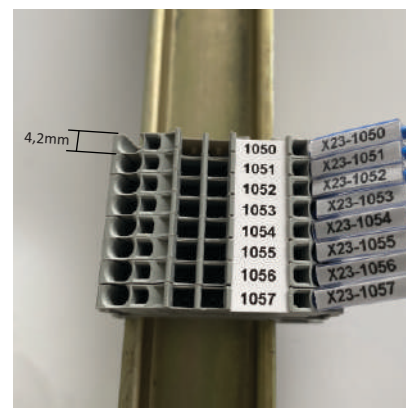
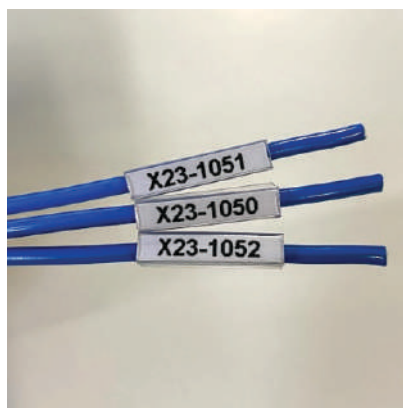
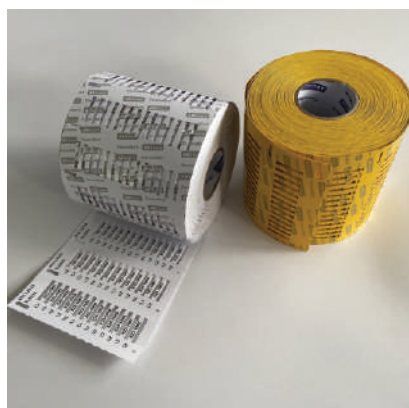
- Material: Flexible Transparent PVC(sleeve)
Hard PVC (Label)
- Certificate: RoHS
- Self-extinguishing: UL94-V0
- Work temperature: -30°C to +70°C



Identification Mini

Code	Description	Pack
EFZ 3,2x18 __ 100 MINI	3,2x18 wire label, Hard PVC	3600 Labels
SLZ 0/18 MINI	0,22mm to 0,5mm wire mini sleeve \varnothing 1,3 a 2,1 mm	1000 uni.

Colors White (960) Grey (860) Black (160) Yellow (460) Example: EFZ 4x15 960 100 MINI



The transparent sleeves and supports have been developed for easy wire, cables and electrical components identification. To replace the label, it isn't necessary to disconnect the wire or cable, but it is necessary to put it on before clipping the terminal.



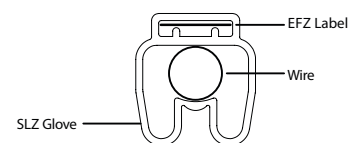
Technical specifications:

Material: Flexible transparent PVC
 Self-extinguishing: UL94-V0
 Work temperature: -30°C to +70°C

SLZ Sleeve

Code	Description	Pack
SLZ 0/_	Wire sleeve EFZ – section 0,22 to 0,5 mm ² , diameter 1,3 to 2,1 mm	1000 Units.
SLZ 1/_	Wire sleeve EFZ- section 0,75 to 1,5 mm ² , diameter 2,3 to 2,9 mm	1000 Units.
SLZ 2/_	Wire sleeve EFZ 2,5- section 6,0 mm ² , diameter 3,4 to 4,5 mm	1000 Units.
SLZ 3/_	Wire sleeve EFZ 10,0- section 16,0 mm ² , diameter 5,9 to 7,0 mm	1000 Units.
SLZ 4/_	Wire sleeve EFZ 25,0 – section 35,0 mm ² , diameter 8,9 to 9,9 mm	1000 Units.

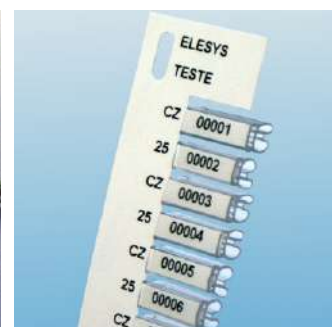
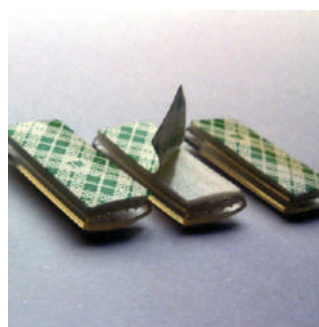
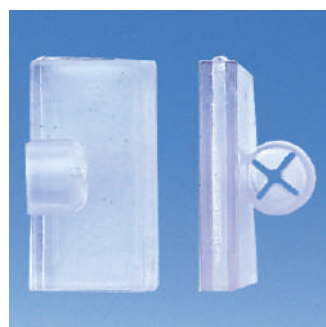
The sleeve come in standard lengths of 10, 12, 13.5, 15, 18, 23, and 30 mm, or in meters. The SLZ 3 and SLZ 4 models also come in 200 units packs. Example: SLZ 2/15 (15mm length) or SLZ 2/50 M (for meters) The SLZ sleeve use EFZ labens (pages 12 and 13)



Supports

Code	Description	Pack
SLE-209	9x20mm label support used with 2,5mm clamp	200 Units.
SLK-209	Suporte etiqueta 9x20 mm para fios de 0,5 a 6,0 mm ² , diâmetro de 2,1 a 4,5 mm	200 Units.
SLTZ 9x20	9x20mm label support used with two 2,5mm clamp	100 Units.
SLTZ 9x40	9x40mm label support used with two 2,5mm clamp	100 Units.
SAZ 9/4910	9x20 support label with 3M VHB4910 adhesive*	100 Units.
SLE-23	23mm transparent support for EFZ 4x23 labels used with 2,5mm clamp	200 Units.

The SLE-209, SLK-209, SLTZ 9x20, SLT 9x40 and SAZ 9 use EAZ 9x20 an EAZ 9x40 labels (page 21) The SLE-23 support use EFZ 4x23 label (page 13)



SLE-209

SLK-209

SAZ 9/4910

SLZ 3/15

SAZ 9/4910 Suitable for use on smooth surfaces

Adhesive label to roll up with print protection with transparent film overlay.

It is the ideal solution for identifying wires and cables in these situations:

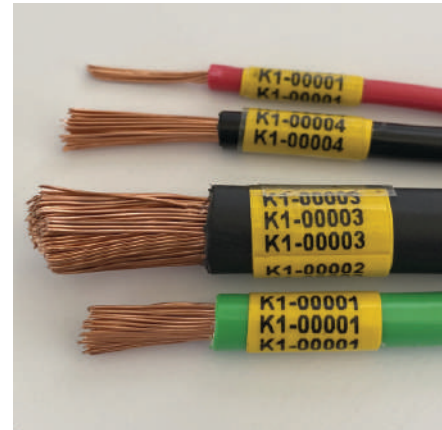
- Few space between the conductors
- The conductors can't be desconnected (energized)
- When you have the need to read the identification at different angles

With the advantage of dispensing with installation support

Can be printed with BPE printer.

Technical specifications:

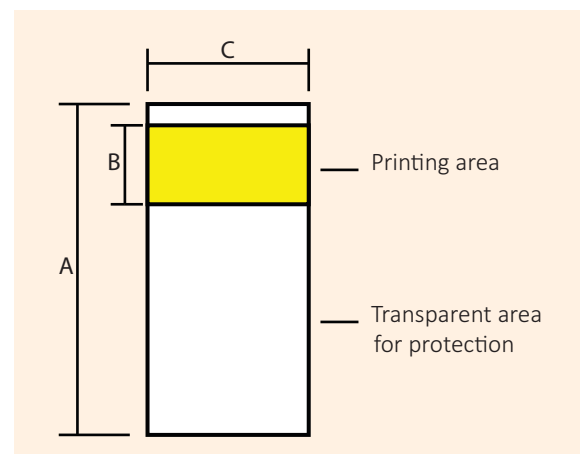
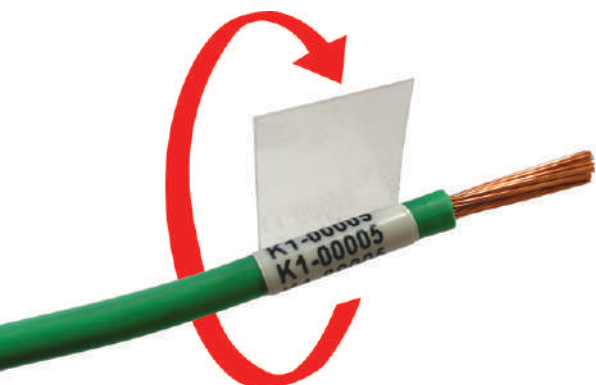
Material:	PVC acrylic adhesive film
Work temperature:	-30°C to +70°C
Friction resistance:	CEI 16-7
Certificate:	RoHS
Self-extinguishing:	UL94-V0
Resistance:	Water, oil, graese and UVA rays



Code	Description	Measures (mm)			Pack
		A	B	C	
EAE 25/11x15 __ 221	Wire adhesive label 1 to 2,5 mm ² , Ø external 2,5 to 3,5 mm	25	11	15	5040 Labels
EAE 25/11x23 __ 221	Wire adhesive label 1 to 2,5 mm ² , Ø external 2,5 to 3,5 mm	25	11	23	3360 Labels
EAE 25/11x30 __ 221	Wire adhesive label 1 to 2,5 mm ² , Ø external 2,5 to 3,5 mm	25	11	30	2520 Labels
EAE 38/18x15 __ 221	Wire adhesive label 2,5 to 10 mm ² , Ø external 3,5 to 6 mm	38	18	15	3000 Labels
EAE 38/18x23 __ 221	Wire adhesive label 2,5 to 10 mm ² , Ø external 3,5 to 6 mm	38	18	23	2000 Labels
EAE 38/18x30 __ 221	Wire adhesive label 2,5 to 10 mm ² , Ø external 3,5 to 6 mm	38	18	30	1500 Labels
EAE 50/21x15 __ 221	Wire adhesive label 10 to 16 mm ² , Ø external 6 to 7 mm	50	21	15	2520 Labels
EAE 50/21x23 __ 221	Wire adhesive label 10 to 16 mm ² , Ø external 6 to 7 mm	50	21	23	1680 Labels
EAE 50/21x30 __ 221	Wire adhesive label 10 to 16 mm ² , Ø external 6 to 7 mm	50	21	30	1260 Labels
EAE 75/36x15 __ 221	Wire adhesive label 16 to 50 mm ² , Ø external 7 to 12,3 mm	75	36	15	1740 Labels
EAE 75/36x23 __ 221	Wire adhesive label 16 to 50 mm ² , Ø external 7 to 12,3 mm	75	36	23	1160 Labels
EAE 75/36x30 __ 221	Wire adhesive label 16 to 50 mm ² , Ø external 7 to 12,3 mm	75	36	30	870 Labels
EAE 100/48x15 __ 221	Wire adhesive label 50 to 95 mm ² , Ø external 12,3 to 15,4 mm	100	48	15	1320 Labels
EAE 100/48x23 __ 221	Wire adhesive label 50 to 95 mm ² , Ø external 12,3 to 15,4 mm	100	48	23	880 Labels
EAE 100/48x30 __ 221	Wire adhesive label 50 to 95 mm ² , Ø external 12,3 to 15,4 mm	100	48	30	660 Labels
EAE 135/60x15 __ 221	Wire adhesive label 95 to 150 mm ² , Ø external 15,4 to 19,2 mm	135	60	15	1020 Labels
EAE 135/60x23 __ 221	Wire adhesive label 95 to 150 mm ² , Ø external 15,4 to 19,2 mm	135	60	23	680 Labels
EAE 135/60x30 __ 221	Wire adhesive label 95 to 150 mm ² , Ø external 15,4 to 19,2 mm	135	60	30	510 Labels
EAE 135/60x50 __ 221	Wire adhesive label 95 to 150 mm ² , Ø external 15,4 to 19,2 mm	135	60	50	340 Labels

Colors White (960) Yellow (460) Example: EAE 25/9X23 960 211

Flexible insulation cables 750v



Adhesive label to roll up, isn't necessary gloves for wire and cables identify. It is the ideal solution in these situations:

- Few space between the conductors
 - The conductors can't be desconnected (energized)
 - When you have the need to read the identification at different angles
- The Thermo Mark system generates the necessary repetition of the text.

Technical specifications:

Material: Flexibel PVC (front)
Permanent polyacrylate (adhesive)

Certificate: RoHS

Self-extinguishing: UL94-V0

Work temperature: -30°C to +80°C

Front thickness: 30 µm

UV-protected labels



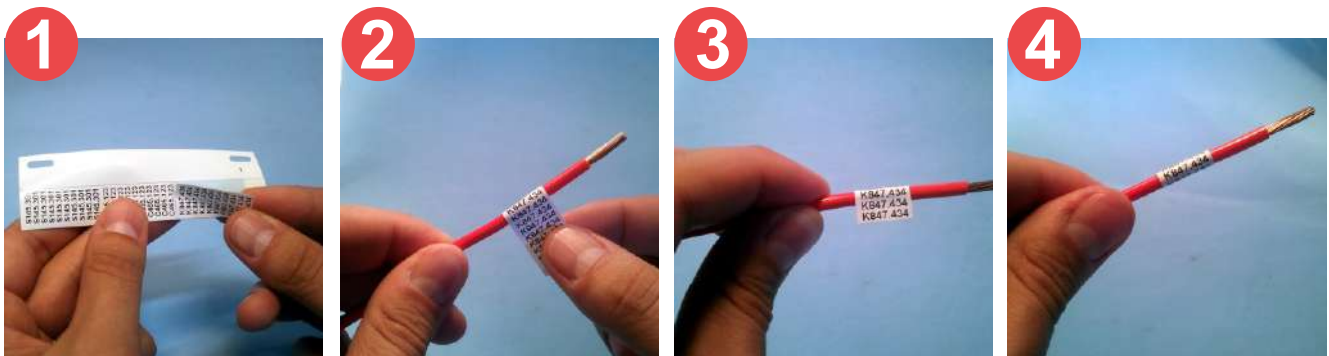
Rolling up adhesive labels

Code	Description	Diameter (mm)	Pack
EEFZ 15x15 ___ 211	Adhesive label for 0,5mm wires	<2.1	4680 Labels
EEFZ 15x20 ___ 211	Adhesive label for 0,5 to 1mm wires	2,1 a 2,4	4020 Labels
EEFZ 15x25 ___ 211	Adhesive label for 1,5 to 2,5mm wires	2,9 a 3,6	3480 Labels
EEFZ 15x32 ___ 211	Adhesive label for 4 to 6 mm wires	4,0 a 4,5	3000 Labels
EEFZ 15x50 ___ 211	Adhesive label for 10 to 16mm wires	5,9 a 7,0	2160 Labels

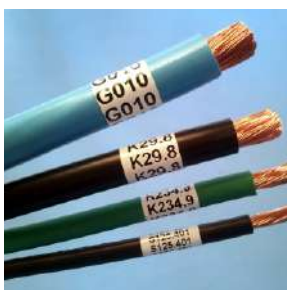
Example: EEFZ 15x32 160 211

Colors:

	White (960)		Yellow (460)		Gray (860)		Green (560)
	Blue (660)		Light Blue (620)		Black (160)		Dark Green (580)
			Orange (360)		Red (260)		



EEFZ 15- 4steps assembly.



The PE Sleeve clips are designed for easy identification of the wire and cables already connected to the terminals..

Identification can be done without unplugging the wire, ensuring time savings. This prevents cutting the terminal, shorting the wire, and de-energizing the equipment. Use the Thermo Mark system with the 4x18 EFZ label, printing 80.000 labels by hour..

Contains two claws that prevent easy detachment of wires and cables. Indicated for retrofitting.

Technical specifications:

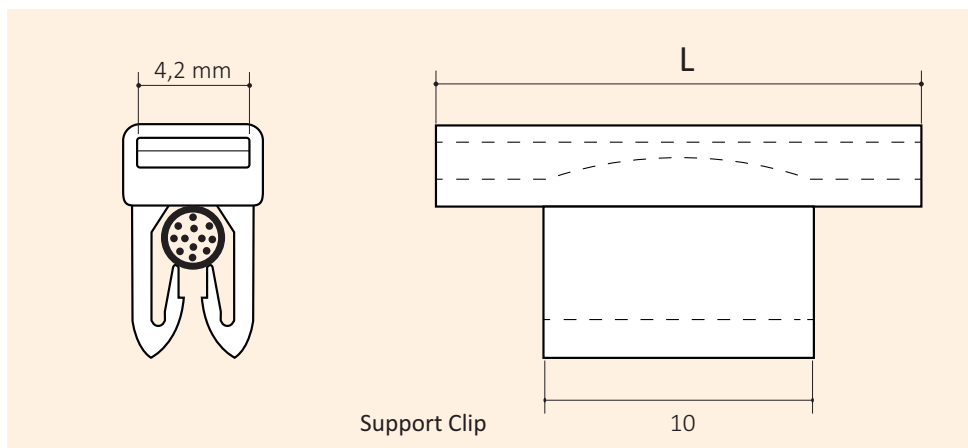
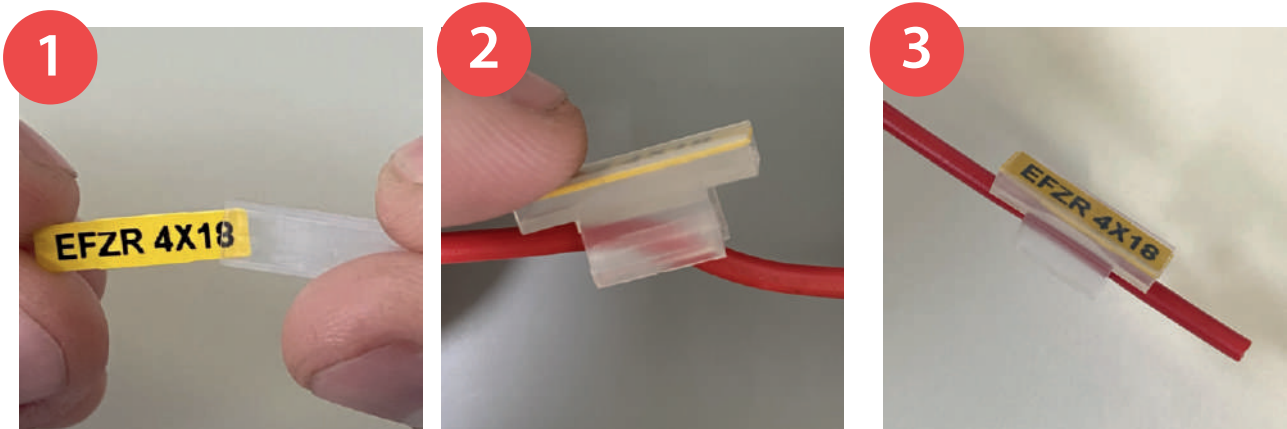
Material: Polypropylene
 Certificate: RoHS, Halogen Free
 Self-extinguishing: UL94-V0
 Work temperature: -10°C to +100°C



Code	Description	L (mm)	Wire Outside Ø	Pack
PE Clip 01/18	Sleeve Clip 01, for 0,5 to 1 mm ² cables	18	2,1 to 2,4 mm	200 Units.
PE Clip 02/18	Sleeve Clip 02, for 1,5 to 2,5 mm ² cables	18	2,8 to 3,4 mm	200 Units.
PE Clip 03/18	Sleeve Clip 03, for 4,0 to 6,0 mm ² cables	18	3,9 to 4,4 mm	200 Units.
PE Clip 04/18*	Sleeve Clip 04, for 10,0 to 16,0 mm ² cables	18	5,6 to 7,0 mm	200 Units.

Section valid for 750v insulation class in Flexible PVC

*Under development, available soon



Patented product: MU BR 0004 791 2

Reproduction without permission of the owner is prohibited.

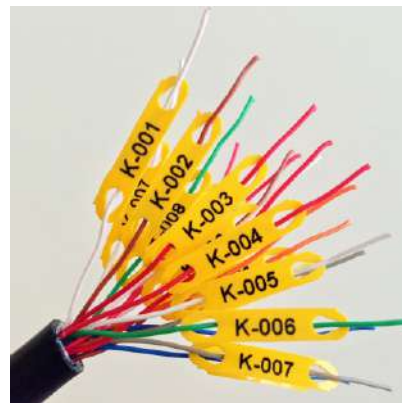
EFZD wire labels from 0.22 to 6 mm² meet the requirements of wire identification in tight spaces, such as:

- Terminal blocks in 2,4mm steps devices.
- Multiple sockets.
- 1mm ou more wires.

Higher cost-benefit, because it does not use gloves and supports. The printed tags are applied directly on wire.

Technical specifications:

Material: Hard PVC
 Certificate: RoHS
 Self-extinguishing: UL94-V0
 Work temperature: -30°C to +70°C

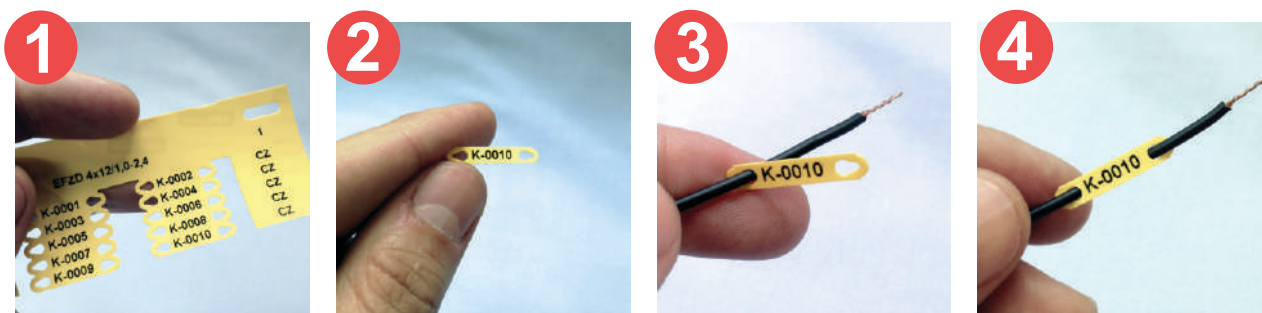


Code	Description	Diameter	Pack
EFZD 4x12/1,0-2,4 ___ 100 F	0,22 to 1,0 mm ² wire label	1,0 to 2,4	3350 labels
EFZD 5x18/2,0-3,5 ___ 100 F	0,5 to 2,5 mm ² wire label	2,0 to 3,5	3000 labels
EFZD 6x15/3,0-4,2 ___ 100 F	1,5 to 4,0 mm ² wire label	3,0 to 4,2	2650 labels
EFZD 6x18/3,0-4,2 ___ 100 F	1,5 to 4,0 mm ² wire label	3,0 to 4,2	2650 labels
EFZD 6x23/3,0-4,2 ___ 100 F	1,5 to 4,0 mm ² wire label	3,0 to 4,2	1350 labels
EFZD 6x30/3,0-4,2 ___ 100 F	1,5 to 4,0 mm ² wire label	3,0 to 4,2	1350 labels
EFZD 8x23/4,0-5,5 ___ 100 F	4,0 a 6,0 mm ² wire label	4,0 to 5,5	1000 labels

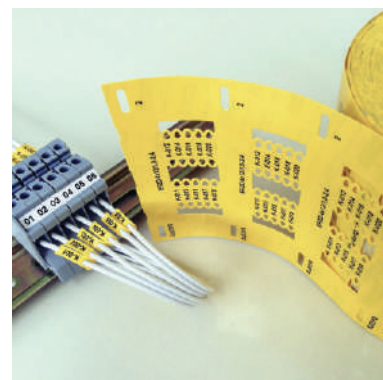
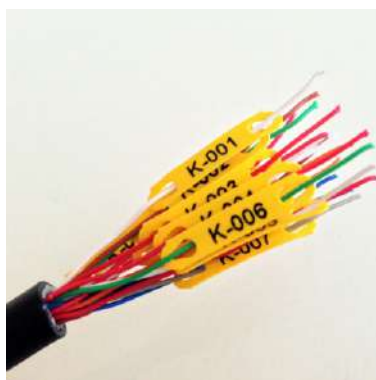
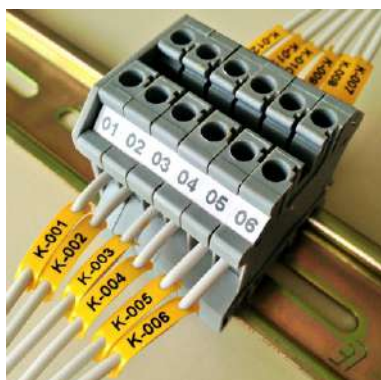
Example: EFZD 4x12/1,0-2,4 **960** 211

Colors: White (960) Yellow (460)

Section valid for 750v insulation class in Flexible PVC



EFZD - Easy 4 steps assembly.

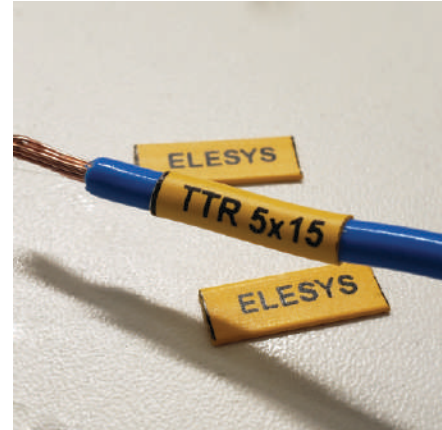


The thermoretractable tube is widely used in on-board equipment, in subway transportation, naval and aerospace.
 Occupies little space in the identification, leaving it more organized and with better aesthetic finish.
 Provides more firmness in the threads, as well as acting as an insulator.

Available in yellow, other colors on demand.
 Can be printed in BPE300 or Bp1200i

Technical specifications:

Material: Cross-linked polyethylene
 Certificate: RoHS, Halogen Free
 Self-extinguishing: UL94-V0
 Work temperature: -55°C to +125°C
 Contraction cue: 2:1
 Minimum contraction heat: +100°C



Code	Before contraction		After contraction		Pack
	Ø Inside (mm)	Flat width (mm)	Ø Inside (mm)	Wall width (mm)	
TTR 1,6 460 20M	1,6	3,6	0,79	0,45 ± 0,06	20 Meters
TTR 2,4 460 20M	2,4	4,9	1,18	0,49 ± 0,06	20 Meters
TTR 3,2 460 20M	3,2	6,3	1,59	0,51 ± 0,06	20 Meters
TTR 4,8 460 20M	4,8	8,9	2,36	0,54 ± 0,06	20 Meters
TTR 6,4 460 20M	6,4	11,5	3,18	0,56 ± 0,06	20 Meters
TTR 9,5 460 20M	9,5	16,7	4,57	0,59 ± 0,06	20 Meters
TTR 12,7 460 20M	12,7	21,8	6,35	0,60 ± 0,07	20 Meters
TTR 19 460 20M	19	32,2	9,53	0,62 ± 0,07	20 Meters
TTR 25 460 20M	25	63,2	12,7	0,63 ± 0,07	20 Meters

Guide for Heat shrinktube printing

Code	Description	Code	Description
GTR 1,6 460 20M	Guide for retractable tube TTR 1,6	GTR 9,5 460 20M	Guide for retractable tube TTR 9,5
GTR 2,4 460 20M	Guide for retractable tube TTR 2,4	GTR 12,7 460 20M	Guide for retractable tube TTR 12,7
GTR 3,2 460 20M	Guide for retractable tube TTR 3,2	GTR 19 460 20M	Guide for retractable tube TTR 19
GTR 4,8 460 20M	Guide for retractable tube TTR 4,8	GTR 25 460 20M	Guide for retractable tube TTR 25
GTR 6,4 460 20M	Guide for retractable tube TTR 6,4		

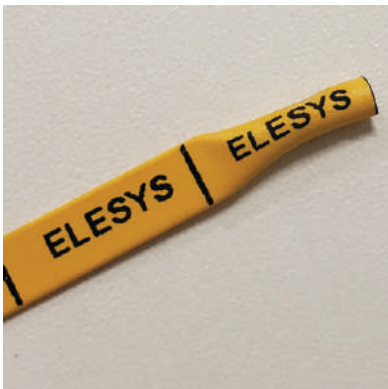
Comments:

- Printes with a specific ribbon (code. RPE 160 TTR)

For more information, see section Printers and Accessories, see page 08.

In development, available soon

Three diferent cuts.



printed by the software
(manual cut)



Complete cut
With BPE300 printer
*requires accessory



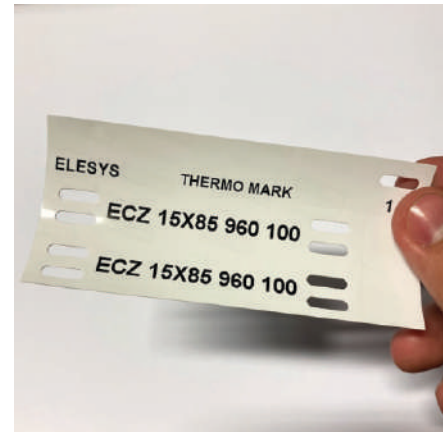
knurled cut
With Bp1200i Printer
* requires accessory

The labels are produced in hard PVC for direct application on the cable
 Use indication:
 In conjunction with the SLTZ support for outdoor use.
 Direct cable application (ECZ) for indoor environment.

Clamped with 2.5 and 4.5 mm clamps directly on the cable and there is no limitation of cable gauge.

Technical specifications:

Material: Hard PVC (label)
 Flexible PVC (support)
 Certificate: RoHS
 Self-extinguishing: UL94-V0
 Work temperature: -30°C to +70°C



Cable labels

Code	Description	Pack
ECZ 15x65 ___ 100	15x65mm label for 2,5 to 4,5 mm clamp	1080 labels.
ECZ 15x85 ___ 100	15x85 mm label for 2,5 to 4,5 mm clamp	1080 labels.
ECZ 30x85 ___ 100	30x85 mm label for 2,5 to 4,5 mm clamp	500 labels.
EAZ 9x20/2 ___ 100	9x20 mm label for SLTZ 9x20 gloves for 2,5mm clamp	6400 labels.
EAZ 9x40/2 ___ 100	9x40 mm label for SLTZ 9x40 gloves for 2,5mm clamp	2560 labels.

Example: ECZ 15x85 460 100

Colors White (960) Yellow (460)

Cable supports

Code	Description	Pack
SLTZ 9x20	Support of cristal flexible PVC for 9x20 mm labels, fix with 2,5 mm clamp	100 labels.
SLTZ 9x40	Support of cristal flexible PVC for 9x40 mm labels, fix with 2,5 mm clamp	100 labels.



SLTZ 9x40
 Identification with support
 Indicare for cables that can move and friction occurs between them.



ECZ 15x85
 Direct identification

Cable tags ECZ produced in Cross-linked Polyethylene, a material resistant to exposure to sun and rain in outdoor environments. This ensures durability and legibility of identifications.

Fastened with clamps 2.5 to 4.5 mm directly on the cable and there is no limitation of cable gauge.

Ribbon RPE 160 TTR is required to print this material.



Technical specifications:

Material: Cross-linked Polyethylene
 Certificate: RoHS, Halogen Free
 Self-extinguishing: Norma UL94-V0
 Work temperature: -55°C to +125°C

Cable labels

Code	Description	Pack
ECZ 10,4x64 ___ 850	10,4x64 mm label for 2,5 to 4,5 mm clamp	250 labels.
ECZ 15x64 ___ 850	15x64 mm label for 2,5 to 4,5 mm clamp	250 labels.

Example: ECZ 10,4x64 460 850 Color Yellow (460)



Elesys has self-made label holders for Ø22.5 mm buttons and markers. Also as label-holders for multiple applications.

Besides labels, for Elesys label-holders and other manufacturers like Telemecanique and Schmersal. And of labels for label-holders for multiple applications.

Technical specifications:

Material: PA 6,6 and PC
 Certificate: RoHS
 Self-extinguishing: UL94-V0
 Work temperature: -40°C to +100°C



Push buttons Elesys supports

Code	Description	Pack
PEBZ 22,5 161 490	Push buttons support, 22,5 mm diameter, without adhesive	100 Units.
PEBZ 22,5 161 491	Push buttons support, 22,5 mm diameter, adhesive	100 Units.
PEZ 18,7x26,7 161 491	18,7x26,7 support label, adhesive	100 Units.

Push button label

Code	Description	Pack
EAZ 18,7x26,7 ___ 100 ELE F	18,7x26,7 hard PVC label for Elesys push button support	1375 Units.

Push button display

Code	Description	Pack
PELZ 18,7x26,7 060 590	18,7x26,7 display for Elesys push button	100 Units.

Labels for others push buttons supports

Code	Description	Pack
EAZ 8,2x27 ___ 100 TEL F	8,2x27 mm label (Telemecanique push button)	3300 labels.
EAZ 17,8x26,8 ___ 100 TEL F	17,6x26,8 mm label (Telemecanique push button)	1375 labels.
ETA 18,5x26,5 ___ 101 SCH F	18,5x26,5 mm label (PIN22 Schmersal push button)	525 labels.



Identification label for Terminal blocks ABB Entelec.

Assembly photo merely illustrative. The terminal blocks shown here are not available for sale.

Technical specifications:

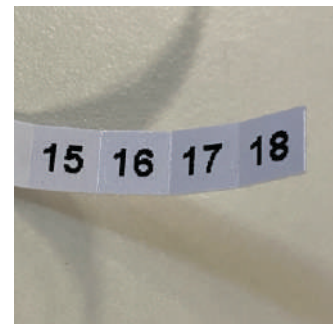
Material: Hard PVC
 Certificate: RoHS
 Self-extinguishing: UL94-V0
 Work temperature: -30°C to +70°C
 Colors White (960) Yellow (460)
 Example: EBZ 10,2x5 960 100 ENT



Terminal Block Label ABB Entelec (M models)

Code	Description	Pack
EBZ 10,2x5 ___ 100 ENT F	Terminal block label MA2.5/5	8740 Labels.
EBZ 10,2x6 ___ 100 ENT F	Terminal block label M4/6	7360 Labels.
EBZ 10,2x8 ___ 100 ENT F	Terminal block label M6/8	5520 Labels.
EBZ 10,2x10 ___ 100 ENT F	Terminal block label M10/10	4140 Labels.
EBZ 10,2x12 ___ 100 ENT F	Terminal block label M16/12	3680 Labels.
EBZ 10,2x16 ___ 100 ENT F	Terminal block label M35/16	2760 Labels.

Semi-cutted

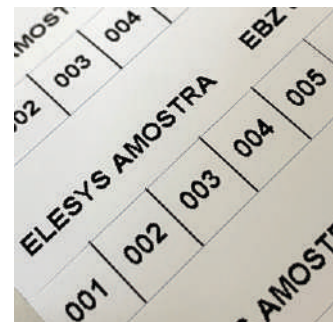


Pre-cutter label

Terminal Block Label ABB Entelec (M models)

Code	Description	Pack
EBZ 10,2x100 ___ 100 ENT F	Terminal block label MA2.5/5, M4/6, M6/8, M10/10, M16/12 ou M35/16. Software determine the labels divisions	460 Labels.

Unique Strip



Labels with division made by software

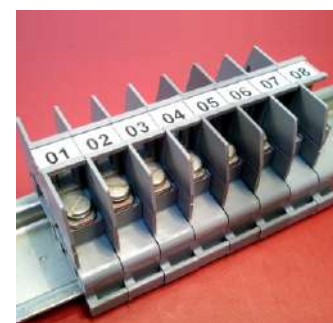
Terminal Block Label ABB Entelec (ZS models)

Code	Description	Pack
EBZ 8,5x100 ___ 211 ENT F	Terminal block label ZS2.5, ZS4, ZS6, Zs10, ZS16	500 Labels.



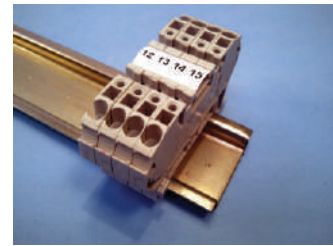
Terminal Block Label ABB Entelec (M6 models)

Code	Description	Pack
EBZ 7,5x100 ___ 100 ENT F	Terminal block label M6/9, M6/12	500 Labels.



Terminal Block Label ABB Entrelec (D models)

Code	Description	Pack
EBZ 10,9x5 ___ 100 ENT F	Terminal block label D2,5/5	9200 Labels.
EBZ 10,9x6 ___ 100 ENT F	Terminal block label D4/6	7360 Labels.
EBZ 10,9x8 ___ 100 ENT F	Terminal block label D6/8	5520 Labels.



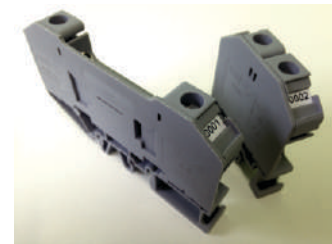
Terminal Block Label ABB Entrelec (TM models)

Code	Description	Pack
EBZ 4,9x13,5 ___ 100 ENT F	Terminal block label Tm5	4200 Labels.



Terminal Block Label ABB Entrelec (RGW models)

Code	Description	Pack
EBZ 4,9x8,6 ___ 100 ENT F	Terminal block label RGW6	6600 Labels.



Identification label for Terminal blocks Phoenix.

Assembly photo merely illustrative. The terminal blocks shown here are not available for sale.

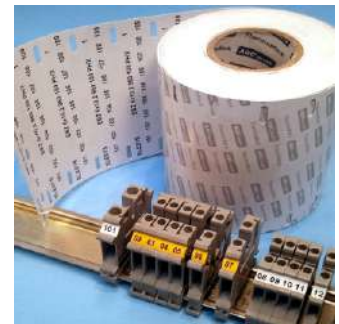
Technical specifications:

Material: Hard PVC
 Certificate: RoHS
 Self-extinguishing: UL94-V0
 Work temperature: -30°C to +70°C
 Colors White (960) Yellow (460)
 Example: EBZ 6X10,2 960 100 PHX



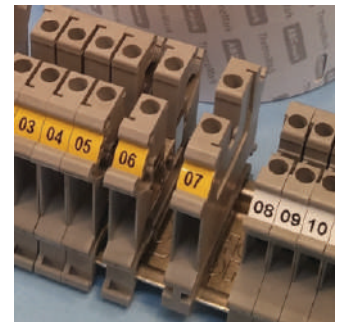
Terminal block labels Phoenix (UK, MTK, UDK URTK and TB models)

Code	Description	Pack
EBZ 6x4,2 ___ 100 PHX F	Terminal block labels UK 1,5N	12000 Labels.
EBZ 6x5,2 ___ 100 PHX F	Terminal block labels 2,5 UK, MTK, TB	10450 Labels.
EBZ 6x6,2 ___ 100 PHX F	Terminal block labels UK 5N, UDK 4, TB 4	8800 Labels.
EBZ 6x8,2 ___ 100 PHX F	Terminal block labels UK 6N, TB 4 HE, URTK/S	6600 Labels.
EBZ 6x10,2 ___ 100 PHX F	Terminal block labels UK 10N, TB 10	4950 Labels.
EBZ 6x12,2 ___ 100 PHX F	Terminal block labels TB 16	3885 Labels.



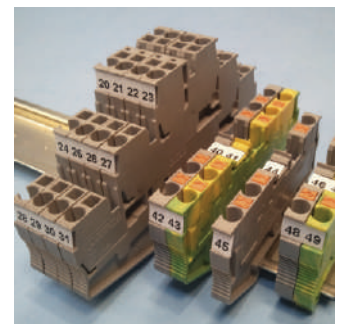
Terminal block labels Phoenix (UK, MTK, UDK URTK and TB models)

Code	Description	Pack
EBZ 6x100 ___ 100 PHX F	Terminal block labels Phoenix UK, MTK, UDK URTK and TB models. Software determine the labels divisions	550 Labels.



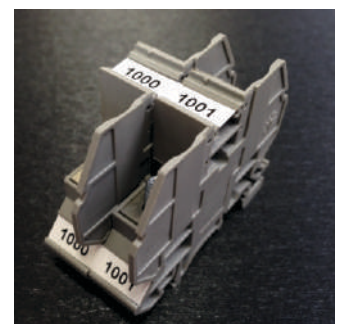
Terminal block labels Phoenix (PIT and ST Phoenix models)

Code	Description	Pack
EBZ 6,2x5,2 ___ 100 PHX F	Terminal block labels PIT 2,5, PTT 2,5, ST 2,5	10450 Labels.
EBZ 6,2x6,2 ___ 100 PHX F	Terminal block labels PTT 4, ST 4	8800 Labels.
EBZ 6,2x8,2 ___ 100 PHX F	Terminal block labels ST 6	6050 Labels.



Terminal block labels Phoenix (RBO Phoenix models)

Code	Description	Pack
EBZ 6,3x13 ___ 100 PHX F	Terminal block labels RBO5	3850 Labels.



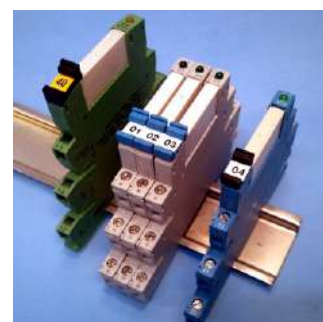
Terminal block labels Phoenix (OTTA Phoenix models)

Code	Description	Pack
EBZ 6x7,5 ___ 100 PHX F	Terminal block labels OTTA 2,5	7150 Labels.
EBZ 6x9,5 ___ 100 PHX F	Terminal block labels OTTA 6	5500 Labels.
EBZ 6x14 ___ 100 PHX F	Terminal block labels OTTA 25	3300 Labels.



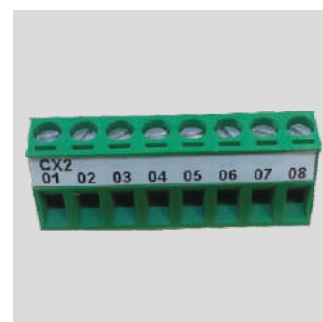
Terminal block labels Phoenix (MT Phoenix models)

Code	Description	Pack
EBZ 6,4x3,5 ___ 100 PHX F	Terminal block labels MPT 1,5/S	14000 Labels.
EBZ 6,4x4,1 ___ 100 PHX F	Terminal block labels MT 1,5	12500 Labels.



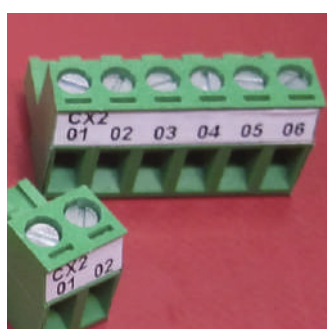
Terminal block labels Phoenix (Relay Phoenix and Similars)

Code	Description	Pack
EBZ 6x6,2 ___ 100 PHX F	Terminal block labels Relê Phoenix PLC-BSP e PLC-BSC, Metaltex PRT8-1, Altronic MKB 24, Finder 93.01.7.024 e similares	8800 Labels.



Terminal block labels Phoenix (Combicon AKZ 950 Phoenix models)

Code	Description	Pack
EBZ 4,8x100 ___ 211 PHX F	Adhesive terminal block labels AKZ 950	1200 Labels.



Identification label for Terminal blocks Wago.

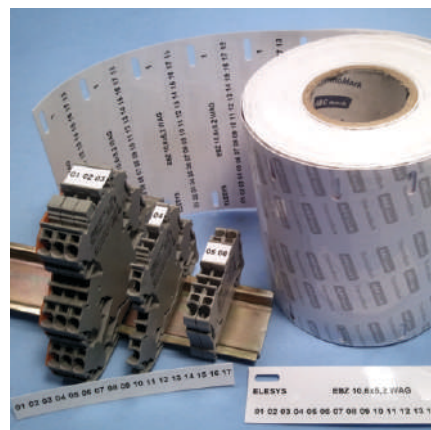
Assembly photo merely illustrative. The terminal blocks shown here are not available for sale.

Technical specifications:

Material: Hard PVC
 Certificate: RoHS
 Self-extinguishing: UL94-V0
 Work temperature: -30°C to +70°C

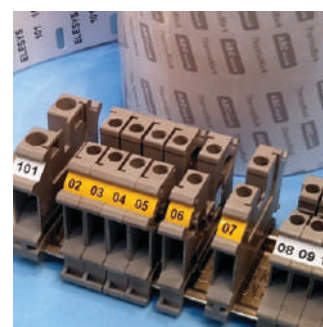
Colors White (960) Yellow (460)

Example: EBZ 10,6x10 960 100 ENT



Terminal Block Label Wago (Topjob models)

Code	Description	Pack
EBZ 10,6x3,5 ___ 100 WAG F	Terminal Block Label model 2000	12420 Labels.
EBZ 10,6x4,2 ___ 100 WAG F	Terminal Block Label model 2001	10580 Labels.
EBZ 10,6x5,2 ___ 100 WAG F	Terminal Block Label model 2002, 2022	8280 Labels.
EBZ 10,6x6,2 ___ 100 WAG F	Terminal Block Label model 2004	6900 Labels.
EBZ 10,6x7,5 ___ 100 WAG F	Terminal Block Label model 2006	5520 Labels.
EBZ 10,6x10 ___ 100 WAG F	Terminal Block Label model 2010	4140 Labels.
EBZ 10,6x12 ___ 100 WAG F	Terminal Block Label model 2016	3680 Labels.
EBZ 10,6x15 ___ 100 WAG F	Terminal Block Label model 788	2760 Labels.



Terminal Block Label Wago (Topjob models)

Code	Description	Pack
EBZ 10,6x100 ___ 100 WAG F	Terminal Block Label models 2000, 2001, 2002, 2022, 2004, 2006, 2016, 788. Software determine the labels divisions.	460 Labels.



Terminal Block Label Wago (Topjob models)

Code	Description	Pack
EBZ 4,4x5,2 ___ 100 WAG F	Terminal Block Label model 2002	10800 Labels.
EBZ 4,4x7,5 ___ 100 WAG F	Terminal Block Label model 2006	7200 Labels.
EBZ 4,4x12 ___ 100 WAG F	Terminal Block Label model 2016	4800 Labels.



Terminal Block Label Wago

Code	Description	Pack
EBZ 10,2x5 ___ 100 ENT F	Terminal Block Label model 281	8740 Labels.

Identification label for various terminal blocks .
Manufacturers such as Connectwell, Conexel, JNG, Connectech, Upon e Weg.

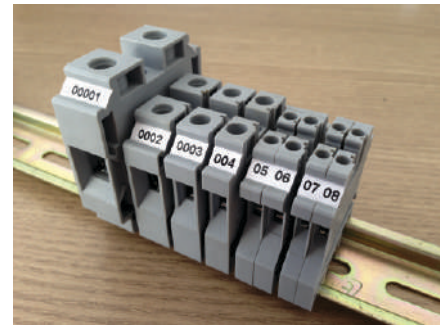
Assembly photo merely illustrative. The terminal blocks shown here are not available for sale.

Technical specifications:

Material: Hard PVC
Certificate: RoHS
Self-extinguishing: UL94-V0
Work temperature: -30°C to +70°C

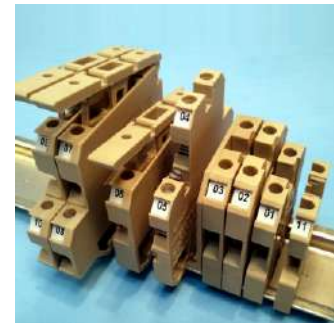
Colors White (960) Yellow (460)

Example: EBZ 10,2x5 960 100 ENT



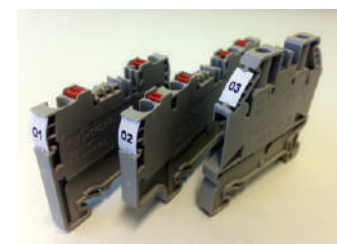
Various terminal blocks - Connectwell

Code	Description	Pack
EBZ 6,2x15 ___ 100 CNW F	Terminal blocks label CGT35U, CTS35UN, STH6	3300 Labels.
EBZ 6x5 ___ 100 CNW F	Terminal blocks label CTS2.5UN	9900 Labels.
EBZ 6,3x5 ___ 100 CNW F	Terminal blocks label CX2.5	9900 Labels.
EBZ 6,2x6 ___ 100 CNW F	Terminal blocks label CTS2.5UE, CTS4UN, CTS4U/4, CTS4UN	8800 Labels.
EBZ 6,3x12 ___ 100 CNW F	Terminal blocks label CTS16U, CSC16T, CTS2	4400 Labels.
EBZ 6x16 ___ 100 CNW F	Terminal blocks label CTS35UN	3300 Labels.
EBZ 4,7x5,4 ___ 100 CNW F	Terminal blocks label CTL 2.5 U	Labels.
EBZ 6,2x18 ___ 100 CNW F	Terminal blocks label CTS 50/70 N, CTS 95/120 N	Labels.
EBZ 6,2x5,2 ___ 100 PHX F	Terminal blocks label PIT 2,5, PTT 2,5, ST 2,5, CGT4N	10450 Labels.
EBZ 6,2x6,2 ___ 100 PHX F	Terminal blocks label PTT 4, ST 4, CKT4U, CKT4U/4	8800 Labels.
EBZ 6,4x5 ___ 100 UPN F	Terminal blocks label UJ5-2.5, CDL4UN	9900 Labels.
EBZ 6,2x8,2 ___ 100 PHX F	Terminal blocks label ST 6, CF4U	6050 Labels.
EBZ 10,2x10 ___ 100 ENT F	Terminal blocks label M10/10, CBS3U	3300 Labels.
EBZ 6,3x8 ___ 100 CNW F	Terminal blocks label CTS6U, Cx6, STH3, CTK6U, CGT6N, CTS6U	6600 Labels.
EBZ 6,3x10 ___ 100 CNW F	Terminal blocks label CTS10U, CX10, STH4, STH4DT, CGT10N, STH4DTFT, CTS10U	4400 Labels.



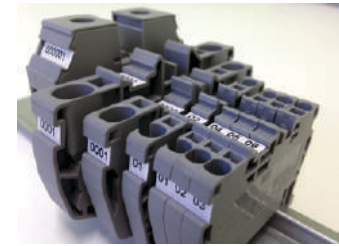
Various terminal blocks - Conexel

Code	Description	Pack
EBZ 4,9x5 ___ 100 CNX F	Terminal blocks label SAK, KDK, DK, ASK	11400 Labels.
EBZ 4,9x4,5 ___ 100 CNX F	Terminal blocks label SAKD 2,5	12600 Labels.



Various terminal blocks - UJ Upun

Code	Description	Pack
EBZ 6,4x5 ___ 100 UPN F	Terminal blocks label UJ5-2.5	9900 Labels.



Various terminal blocks - BTW WEG

Code	Description	Pack
EBZ 5x5 ___ 100 WEG F	Terminal blocks label BTWI 2.5	10450 Labels.
EBZ 5x6 ___ 100 WEG F	Terminal blocks label BTWI 4	8800 Labels.
EBZ 5x8 ___ 100 WEG F	Terminal blocks label BTWI 6	6600 Labels.
EBZ 5x10 ___ 100 WEG F	Terminal blocks label BTWI 10	5000 Labels.
EBZ 5x14,9 ___ 100 WEG F	Terminal blocks label BTWI 35	3300 Labels.



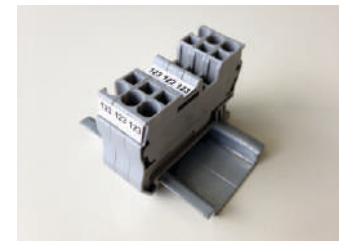
Various terminal blocks - USK Upun

Code	Description	Pack
EBZ 10,2x6 ___ 211 UPN F	Adhesive terminal block labels USK-2.5RD	7200 Labels.



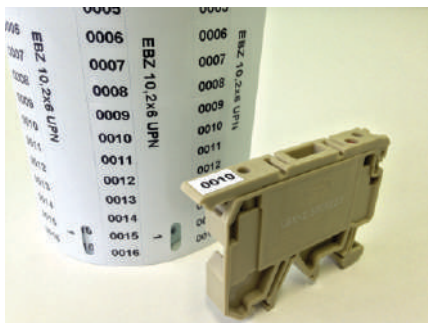
Various terminal blocks - Conexel

Code	Description	Pack
EBZ 4,9x5 ___ 100 CNX F	Terminal blocks label SAK, KDK, DK, ASK	11400 Labels.
EBZ 4,9x4,5 ___ 100 CNX F	Terminal blocks label SAKD 2,5	12600 Labels.



Various terminal blocks - JNG

Code	Description	Pack
EBZ 4,9x5 ___ 100 CNX F	Terminal blocks label JUT2-2.5, JUT2-6	11400 Labels.
EBZ 5,2x5,8 ___ 100 JNG F	Terminal blocks label JUT2-10	8800 Labels.



Labels for identifying poles from various manufacturers such as Phoenix, ABB and Wago.

Assembly photo merely illustrative. The terminal blocks shown here are not available for sale.

Technical specifications:

Material: Hard PVC
 Certificate: RoHS
 Self-extinguishing: UL94-V0
 Work temperature: -30°C to +70°C

Colors White (960) Yellow (460)

Example: EBZ 10,2x5 960 100 ENT



Pole Terminal Block Label Phoenix

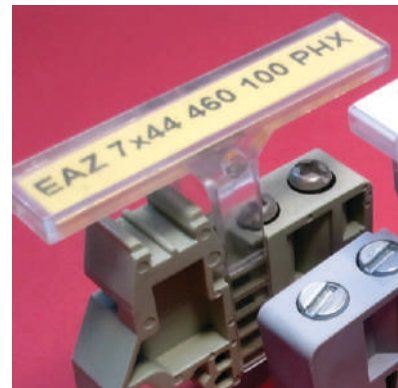
Code	Description	Pack
EAZ 7x26 ___ 100 PHX F	7x26 pole label KLM Phoenix	3120 Labels.
EAZ 7x44 ___ 100 PHX F	7x44 pole label KLM-A Phoenix	2080 Labels.
ETA 9x20 ___ 211 F	9x20 adhesive pole label KLM 3 Phoenix	5600 Labels.

Pole Terminal Block Label ABB

Code	Description	Pack
EBZ 8,7x30 ___ 100 ENT F	8,7x30 pole label BAM	1500 Labels.

Pole Terminal Block Label Wago

Code	Description	Pack
EBZ 10,3x46 960 100 WAG F	10,3x43 pole label 2009-163	1700 Labels.



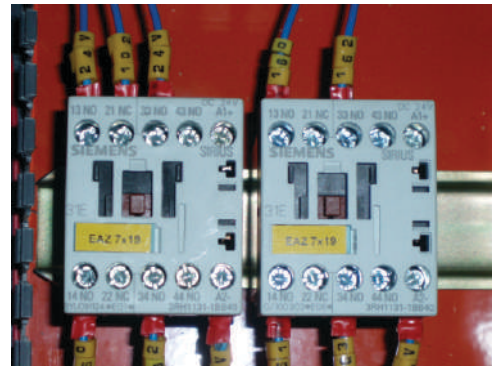
Circuit breaker, contractors and another devices identifications.

Flexible adhesive labels that can be used on ABB, SIEMENS, KLOCKNER, etc. devices.

With its high adhesion strength adhesive, it can be applied over the original labels or directly on their surface.

Technical specifications:

- Material: Flexible PVC
- Certificate: RoHS
- Self-extinguishing: UL94-V0
- Work temperature: -30°C to +80°C



Devices Adhesive Labels

Code	Description	Pack
EAZ 7x19 ___ 211	Adhesive straight corner label 7x19 mm	5450 Labels.
ETA 9x20 ___ 211	Adhesive rounded corner label 9x20 mm	5600 Labels.
EAZ 22,5x109 ___ 100 SIE*	Hard straight corner label 22,5x109 mm	740 Labels.

Colors White (960) Yellow (460) Example: EAZ 7x19 960 211

*Devices identificatio for SIEMENS CLPs
They replace the neutral plates that come with the devices.



Use sugestion. Photo merely illustrative. The devices shown here are not available for sale.

Labels for device identification in general, electrical distribution panels, technical data and visual identification (accident prevention) developed in adhesive flexible PVC for external use and adhesive rigid PVC for internal use.

Technical specifications:

Material: Flexible 211 PVC, Hard adhesive 101 PVC (front)
Permanent Polyacrylate (adhesive)

Certificate: RoHS

Self-extinguishing: UL94-V0

Work temperature: -30°C to +80°C (Flexible), -30°C a +70°C (Hard)

Front Thickness: 30 µm - Flexible 300 µm – Hard

UV-protected labels



Panel and device label

Code	Discription	Pack
ETA 7x15 __	Adhesive label 7x15 mm*	7500 Labels.
ETA 9x20 __	Adhesive label 9x20 mm*	5600 Labels.
ETA 10x45 __	Adhesive label 10x45 mm	1840 Labels.
ETA 12,5x27 __	Adhesive label 12,5x27 mm	3300 Labels.
ETA 15x40 __	Adhesive label 15x40 mm	2100 Labels.
ETA 18,5x26,5 __	Adhesive label 18,5x26,5 mm	2100 Labels.
ETA 19x45 __	Adhesive label 19x45 mm	1600 Labels.
ETA 21x60 __	Adhesive label 21x60 mm	1240 Labels.
ETA 22x54 __	Adhesive label 22x54 mm	1360 Labels.
ETA 25x70 __	Adhesive label 25x70 mm	810 Labels.
ETA 25x90 __	Adhesive label 25x90 mm	580 Labels.
ETA 30x75 __	Adhesive label 30x75 mm	870 Labels.
ETA 39x86 __	Adhesive label 39x86 mm	460 Labels.
ETA 40x110 __	Adhesive label 40x110 mm	380 Labels.
ETA 60x130 __	Adhesive label 60x130 mm	160 Labels.
ETA 60x150 __	Adhesive label 60x150 mm	140 Labels.
ETA 65x83 __	Adhesive label 65x83 mm	290 Labels.
ETA 75x75 __	Adhesive label 75x75 mm	260 Labels.
ETA 75x180 __	Adhesive label 75x180 mm	115 Labels.
ETA 80x110 __	Adhesive label 80x110 mm	190 Labels.
ETA 80x200 __	Adhesive label 80x200 mm	110 Labels.
ETA 82x138 __	Adhesive label 82x138 mm	150 Labels.
ETA 86x125 __	Adhesive label 86x125 mm	170 Labels.



ETA 9X20



ETA 65X83

Example: ETA 60X150 960 221

* Not available in hard PVC.

For hard adhesive PVC label use, we recomend the label unwinder utilization (Page 9)

Colors:

White (960)	Yellow (460)	Gray (860)	Green (560)
Blue (660)	Light Blue (620)	Black (160)	Dark Green (580)
Another ones on demand.	Orange (360)	Red (260)	Light Green (520) (**)

** Available in adhesive or not adhesive hard PVC.

Material	Code
Flexible adhesive PVC	211
Hard adhesive PVC	101

Labels for the identification of appliances in general, electrical distribution boards, technical datas and visual identification (accident prevention) developed in adhesive flexible PVC for external use and adhesive hard PVC for internal use.

EAZ labels replace bas-relief engraved labels.

To resist abrasion, use RBZ Super or transparent film of the same size as the label.

Technical specifications:

Material: Flexible 211 PVC, Hard adhesive 101 PVC (front)
Permanent Polyacrylate (adhesive)

Certificate: RoHS

Self-extinguishing: UL94-V0

Work temperature: -30°C to +80°C(Flexible), -30°C a +70°C (Hard)

Front Thickness: 30 µm- Flexible 300 µm – Hard

UV-protected labels



EAZ 50x100



EAZ 18x45

Distribution boards labels

Code	Description	Pack
EAZ 12x40 ___	Adhesive label 12x40 mm for eletrical boards	3520 Labels.
EAZ 15x45 ___	Adhesive label 15x45 mm for eletrical boards	2400 Labels.
EAZ 18x45 ___	Adhesive label 18x45 mm for eletrical boards	2000 Labels.

Example: EAZ 18x45 160 101

Colors White (960) Yellow (460) Black (160)

Devices identifications

Code	Description	Pack
EAZ 6x100 ___	Adhesive label 6x100 mm*	1100 Labels.
EAZ 10x100 ___	Adhesive label 10x100 mm	950 Labels.
EAZ 10,2x100 ___	Adhesive label 10,2x100 mm	920 Labels.
EAZ 10,6x100 ___	Adhesive label 10,6x100 mm	920 Labels.
EAZ 20x100 ___	Adhesive label 20x100 mm	680 Labels.
EAZ 25x100 ___	Adhesive label 25x100 mm	600 Labels.
EAZ 30x100 ___	Adhesive label 30x100 mm	520 Labels.
EAZ 40x100 ___	Adhesive label 40x100 mm	430 Labels.
EAZ 50x100 ___	Adhesive label 50x100 mm	360 Labels.
EAZ 60x100 ___	Adhesive label 60x100 mm	320 Labels.
EAZ 70x100 ___	Adhesive label 70x100 mm	280 Labels.
EAZ 80x100 ___	Adhesive label 80x100 mm	250 Labels.
EAZ 90x100 ___	Adhesive label 90x100 mm	220 Labels.
EAZ 100x100 ___	Adhesive label 100x100 mm	200 Labels.
EAZ 100x110 ___	Adhesive label 100x110 mm	190 Labels.
EAZ 100x120 ___	Adhesive label 100x120 mm	170 Labels.
EAZ 100x130 ___	Adhesive label 100x130 mm	160 Labels.
EAZ 100x140 ___	Adhesive label 100x140 mm	150 Labels.
EAZ 100x220 ___	Adhesive label 100x220 mm	100 Labels.



EAZ 40x100



EAZ 50x100

*Not available in hard PVC.

For hard adhesive PVC label use, we recomend the label unwinder utilization (Page 9)

Material	Code
Flexible adhesive PVC	211
Hard adhesive PVC	101

Colors: White (960) Yellow (460) Gray (860) Green (560)

Another ones on demand. Blue (660) Ligth Blue (620) Black (160) Dark Green (580)

Orange (360) Red (260) Ligth Green (520) (**)

** Available in adhesive or not adhesive hard PVC.

General devices identifier - adhesive straight corner label

Code	Description	Pack
EAZ 5x25 ____	Adhesive label 5x25 mm	4800 Labels.
EAZ 7x17 ____	Adhesive label 7x17 mm	9300 Labels.
EAZ 7x19 ____	Adhesive label 7x19 mm	5450 Labels.
EAZ 8,5x12,5 ____	Adhesive label 8,5x12,5 mm	8160 Labels.
EAZ 9x30 ____	Adhesive label 9x30 mm	5200 Labels.
EAZ 9x35 ____	Adhesive label 9x35 mm	4600 Labels.
EAZ 10x15 ____	Adhesive label 10x15 mm	7000 Labels.
EAZ 10,2x50 ____	Adhesive label 10,2x50 mm	1840 Labels.
EAZ 12x40 ____	Adhesive label 12x40 mm	3520 Labels.
EAZ 12,8x50 ____	Adhesive label 12,8x50 mm	1700 Labels.
EAZ 15x30 ____	Adhesive label 15x30 mm	2400 Labels.
EAZ 15x40 ____	Adhesive label 15x40 mm	2500 Labels.
EAZ 15x45 ____	Adhesive label 15x45 mm	2400 Labels.
EAZ 16x50 ____	Adhesive label 16x50 mm	1520 Labels.
EAZ 16x70 ____	Adhesive label 16x70 mm	1120 Labels.
EAZ 17,8x26,8 ____	Adhesive label 17,8x26,8 mm	2750 Labels.
EAZ 18,7x26,7 ____	Adhesive label 18,7x26,7 mm	2750 Labels.
EAZ 18x45 ____	Adhesive label 18x45 mm	2000 Labels.
EAZ 19x45 ____	Adhesive label 19x45 mm	1400 Labels.
EAZ 20x50 ____	Adhesive label 20x50 mm	1800 Labels.
EAZ 20x55 ____	Adhesive label 20x55 mm	1350 Labels.
EAZ 20x90 ____	Adhesive label 20x90 mm	670 Labels.
EAZ 21x75 ____	Adhesive label 21x75 mm	650 Labels.
EAZ 21x77 ____	Adhesive label 21x77 mm	650 Labels.
EAZ 22,5x103,5 ____	Adhesive label 22,5x103,5 mm	780 Labels.
EAZ 22,5x109 ____	Adhesive label 22,5x109 mm	740 Labels.
EAZ 25x50 ____	Adhesive label 25x50 mm	1200 Labels.
EAZ 25x80 ____	Adhesive label 25x80 mm	730 Labels.
EAZ 26x50 ____	Adhesive label 26x50 mm	1160 Labels.
EAZ 30x90 ____	Adhesive label 30x90 mm	520 Labels.
EAZ 36x138 ____	Adhesive label 36x138 mm	300 Labels.
EAZ 44x60 ____	Adhesive label 44x60 mm	620 Labels.
EAZ 50x50 ____	Adhesive label 50x50 mm	720 Labels.
EAZ 52,5x23 ____	Adhesive label 52,5x23 mm	1400 Labels.
EAZ 80x200 ____	Adhesive label 80x200 mm	110 Labels.



Material	Code
Flexible adhesive PVC	211
Hard adhesive PVC	101

* Not available in hard PVC.

For hard adhesive PVC label use, we recomend the label unwinder utilization (Page 9)

Colors: White (960) Yellow (460) Gray (860) Green (560)

Another ones on demand. Blue (660) Ligth Blue (620) Black (160) Dark Green (580)

Orange (360) Red (260) Ligth Green (520) (**)

** Available in adhesive or not adhesive hard PVC.

Adhesive labels for visual identification. Available in several dimensions and formats. Indicated for internal and external areas of the panels. Labels are sold unengraved.

Technical specifications:

Material: Flexible 211 PVC, Hard adhesive 101 PVC (front) Permanent Polyacrylate (adhesive)
Certificate: RoHS
Self-extinguishing: UL94-V0
Work temperature: -30°C to +80°C(Flexible), -30°C a +70°C (Hard)
Front Thickness: 30 µm- Flexible 300 µm – Hard
 UV-protected labels



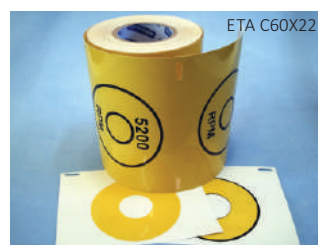
Triangular adhesive labels

Code	Description	Pack
ETA T58 ___ F	Triangular adhesive label 58 mm	320 Labels.
ETA T96 ___ F	Triangular adhesive label 96 mm	105 Labels.



Rounded adhesive labels

Code	Description	Pack
ETA C16 ___ F	Rounded adhesive labels Ø 16 mm	1900 Labels.
ETA C30 ___ F	Rounded adhesive labels Ø 30 mm	780 Labels.
ETA C98 ___ F	Rounded adhesive labels Ø 98 mm	105 Labels.
ETA C60x22 ___ F	Rounded adhesive labels Ø60 hole Ø22,5 mm	160 Labels.



Arrow adhesive label

Code	Description	Pack
ETA S35 ___ F	Arrow adhesive label 35x26 mm	705 Labels.



Adhesive continuous label roll

Code	Description	Pack
EACC 18 ___ F	Continuous label roll with 18 mm strips	12 meters
EACC 25 ___ F	Continuous label roll with 25 mm strips	12 meters
EACC 33 ___ F	Continuous label roll with 35 mm strips	12 meters
EACC 40 ___ F	Continuous label roll with 40 mm strips	12 meters
EACC 48 ___ F	Continuous label roll with 48 mm strips	12 meters
EACC 100 ___ F	Continuous label roll with 100 mm strip	12 meters



Also indicated for distribution dashboards and DIN circuit breakers.

Material	Code
Flexible adhesive PVC	211
Hard adhesive PVC	101

Example: ETA T96 460 211 (Yellow, Flexible adhesive PVC)
 For hard adhesive PVC label use, we recomend the label unwinder utilization (Page 9)

Colors:

White (960)	Yellow (460)	Gray (860)	Green (560)
Blue (660)	Light Blue (620)	Black (160)	Dark Green (580)
Orange (360)	Red (260)	Light Green (520) (**)	

Another ones on demand.

** Available in adhesive or not adhesive hard PVC.

Support made of hard PVC with adhesive for identification of components inside the boards, eliminates the need for individual support for each label. Maintains label alignment and facilitates label changes.



Technical specifications:

Material: Hard PVC
 Certificate: RoHS
 Self-extinguishing: UL94-V0
 Work temperature: -30°C to +70°C

Labels support

Code	Description	Single Bar
TRA 209/1000	PVC support ruler with fixing adhesive VHB 4910/3M	1 meter
TRA 209/550	PVC support ruler with fixing adhesive VHB 4910/3M	550 mm

Available in Dark Gray

Hard PVC label for TRA support

Code	Description	Pack
EAZ 8,5x17 ___ 100 TRA	8,5x17 mm label for TRA support	5000 Labels.
EAZ 8,5x34 ___ 100 TRA	8,5x34 mm label for TRA support	2000 Labels.

Example: EAZ 8,5x17 960 100 TRA

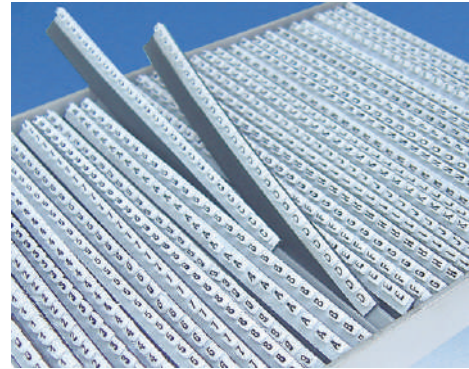
Colors: White (960) Yellow (460)



Manual identification system for wire and cables, with SLM Gloves..
 Supplied in rigid strips with 25 identifiers with the same characters. You must use tool F119 for insertion and F120 to extract.

Technical specifications:

Material: Flexible PVC
 Certificate: RoHS
 Self-extinguishing: UL94-V0
 Work temperature: -30°C to +70°C





UniMark-Sup

Code	Description	Pack
Mark __ 290*	Alfanumeric identifier (25 characters strips)	1000 Units.
UniMark-Sup	Support for 40 unimark strips	1 Unit.
F119M/30	Insertion tool	1 Unit.
F120	Extraction tool	1 Unit.



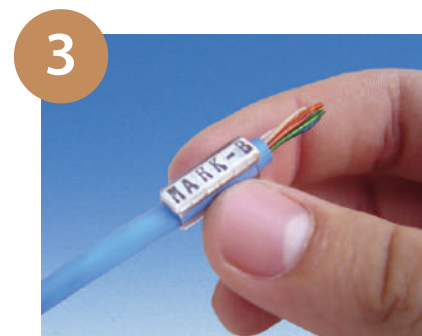
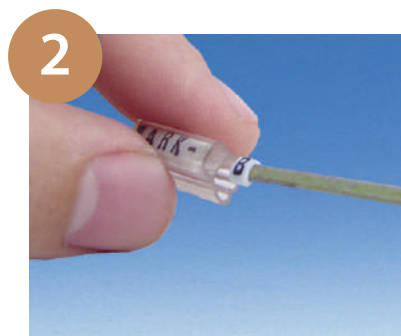
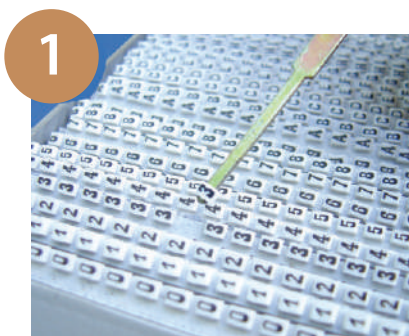
The identifiers characters are marked in black and available in A to Z (upper case), 0 to 9 and symbols +, -, /, =, ~, 1/2

Colors  Yellow (460)  White (960)

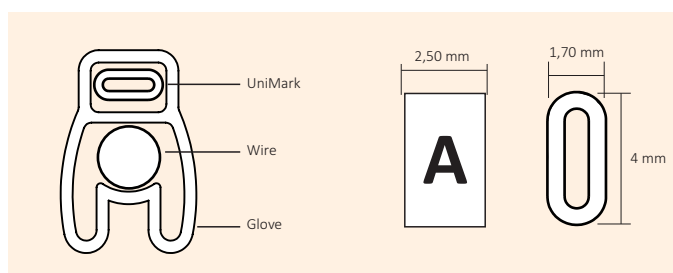
Example: Mark C 960 290

Code	Description	Diameter (mm)	Pack
SLM 0/_	Gloves for 0,22 to 0,5 mm ² wire	1,3 a 2,1	1000 Units.
SLM 1/_	Glove for 0,75 to 1,0 mm ² wire	2,3 a 2,4	1000 Units.
SLM 2/_	Gloves for 1,5 to 2,5 mm ² wire	2,9 a 3,4	1000 Units.
SLM 3/_	Gloves for 4,0 to 6,0 mm ² wire	4,0 a 4,5	1000 Units.
SLM 4/_	Gloves for 10 to 25 mm ² wire	5,9 a 8,8	1000 Units.

Gloves come in standard lengths of 10, 12, 15, 18, 20, 25 and 30 mm, or in Metric
 Example: SLM 2/15 (15 mm length) or SLM 2/50 M. (for meter).



Unimark- 3 steps assembly.



The AM identifier is directly used in the wire and cable, has an engraved character to manually assemble the desire identification.
Has an oval shape, to allow its use in various conductors diameters.

Technical specifications:

Material: Flexible PVC
 Certificate: RoHS
 Self-extinguishing: UL94-V0
 Work temperature: -10°C to +70°C



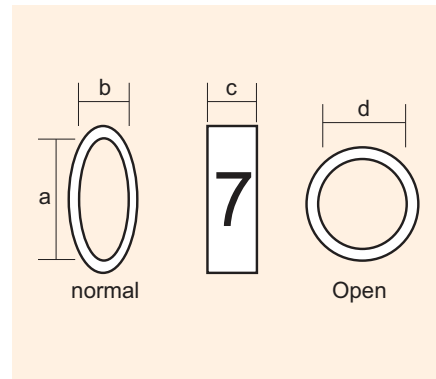
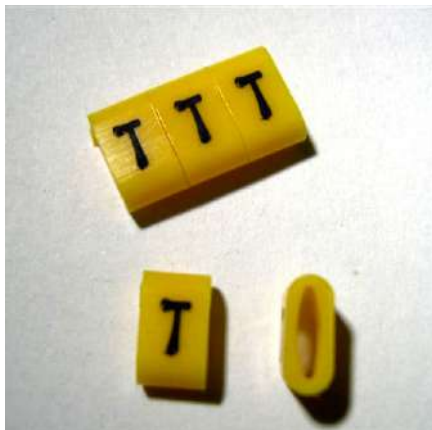
Code	Wire gauge (mm ²)	Wire diameter (mm)	Measures (mm)			
			a	b	c	d
AM 4	1	2,4	3	0,9	4	2,5
AM 6	1,5 to 4	2,9 to 4,0	5,8	1,7	4	4,2
AM 7	4 to 6	4,0 to 4,5	6,4	1,9	4	4,7
AM 8	6 to 10	4,5 to 5,9	8,6	2,5	4	6

Comments:

- The identifiers characters are marked in black and available in A to Z (upper case), 0 to 9 and symbols +, -, /, =, ~, ⚡
- Minimum package: 1.000 units by character.

- Semi-cuted parts
- Gauge refers to 750V class cable.
- For cables with PVC isolation.

Color Yellow



The UN identifiers manufactured in yellow flexible PVC are composed of a specific design that gives them greater elasticity, allowing them to hug two or more wire gauges.

The UN and UNB lines are similar, but they have a cut that allows a fitting between one element and the other, avoiding rotation in the wire.

The identifiers characters are marked in black and available in A to Z (upper case), 0 to 9 and symbols +, -, /, =, ~, ≠

Technical specifications:

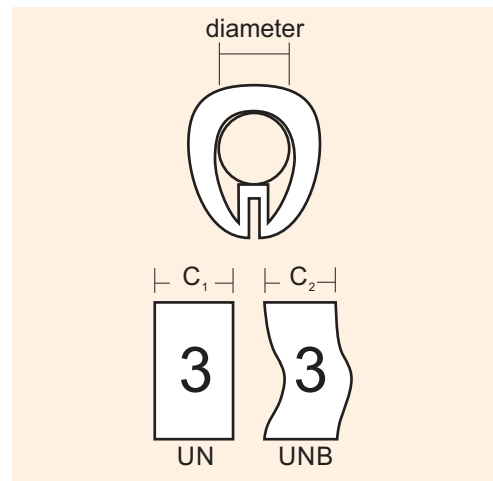
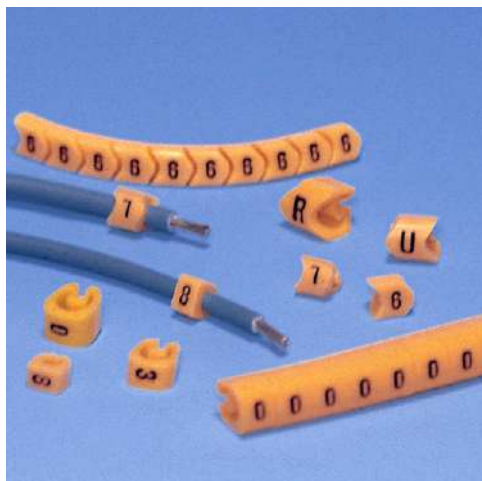
Material: Flexible PVC
 Certificate: RoHS
 Self-extinguishing: UL94-V0
 Work temperature: -10°C to +70°C



Code	Wire gauge (mm ²)	Measures (mm)		
		Wire diameter (mm)	c1	c2
UN 2 or UNB 2	0,22 to 0,50	1,3 to 2,1	3	4
UN 3 or UNB 3	0,75 to 1	2,3 to 2,4	3	4
UN 4 or UNB 4	1,5 to 2,5	2,9 to 3,4	4	6
UN 6 or UNB 6	4 to 6	4,0 to 4,5	4	6
UN 7 or UNB 7	10 to 16	5,9 to 7,0	12	-

Coments:

- Minimum package: 1.000 units by character.
- Gauge refers to 750V class cable, for cables with PVC isolation.



Wiring Duct are used to bundle and protect wires and cables in electrical panels or in exposed installations.

There are 3 models available, depending on the drilling on the sides (height):

- Smooth Without Drilling. (DNA)
- Semi-Opened (DNC) (DNE)
- Open Cut (DND)

Details of these wiring duct on next pages, besides the available colors.

The wiring duct are provided in 2 meters bars and with holes in the base.

Holes or adhesives in the base, on demand.

Technical specifications:

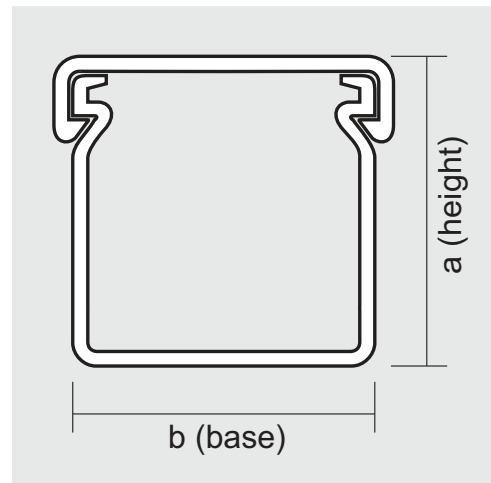
Material: Hard PVC
The material complies with Directive 2002/95/EC-RoHS

Certificate: RoHS

Self-extinguishing: UL94-V0

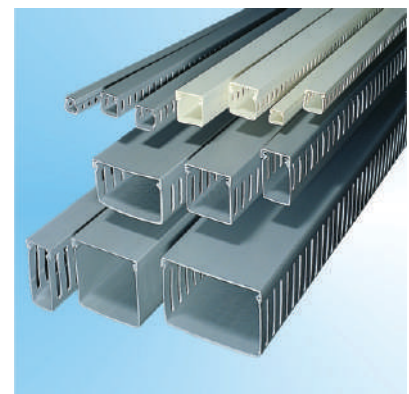
Work temperature: -30°C to +60°C

Softening point: VICAT, 80°C (ASTM 1525).

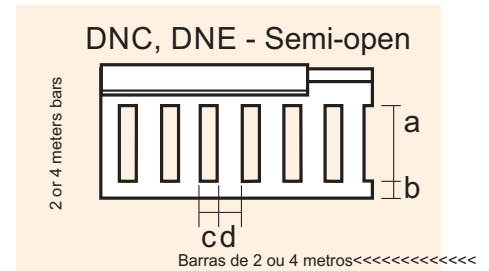


Code	Opening types				Measure (mm)		Useful Section (mm ²)	Max package (m)		
	Smooth	Semi-opened	Total opening		a	b		Big	Medium	Small
	A	C	E	D	a	b				
DN_15015	•	•			15	15	170	500	-	100
DN_22015	•	•			22	15	240	300	-	60
DN_22022	•	•		•	22	22	360	200	100	50
DN_30030	•	•		•	30	30	650	100	50	30
DN_35050	•	•		•	35	50	1.310	80	40	16
DN_35080	•	•		•	35	80	2.360	40	20	8
DN_50030	•	•	•	•	50	30	1.100	100	50	24
DN_50050	•	•	•	•	50	50	1.930	60	36	16
DN_50080	•	•	•	•	50	80	3.380	40	16	8
DN_50110	•	•	•	•	50	110	4.820	24	12	4
DN_50140	•	•	•	•	50	140	6.200	20	8	-
DN_80030	•	•	•	•	80	30	1.920	60	32	16
DN_80050	•	•	•	•	80	50	3.450	40	24	8
DN_80080	•	•	•	•	80	80	5.570	30	14	4
DN_80110	•	•	•	•	80	110	8.190	20	8	4

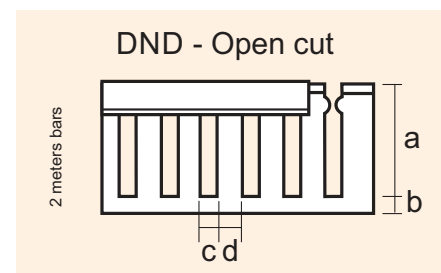
Cover		Max package (m)	
Code	Description	Medium	Small
DNT_015	Chanel cover with 15mm base	-	200
DNT_022	Chanel cover with 22mm base	-	150
DNT_030	Chanel cover with 30mm base	-	100
DNT_050	Chanel cover with 50mm base	-	80
DNT_080	Chanel cover with 80mm base	-	40
DNT_110	Chanel cover with 110mm base	-	30
DNT_140	Chanel cover with 140mm base	20	-



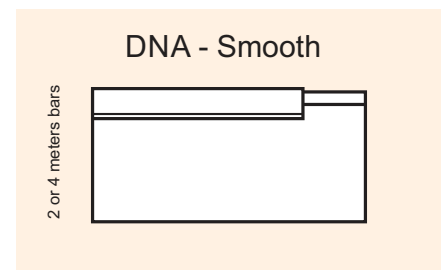
Code	Measures (mm)			
Semi-open	a	b	c	d
DNC 15 ___	5	4	5	6
DNC 22 ___	10	6	4,3	6,7
DNC 30 ___	10	6	4,3	6,7
DNC 35 ___	10	5	4,3	6,7
DNC 50 ___	30	7	6	9
DNC 80 ___	57	7	6	9
DNE 50 ___	30	7	10	10
DNE 80 ___	57	7	10	10



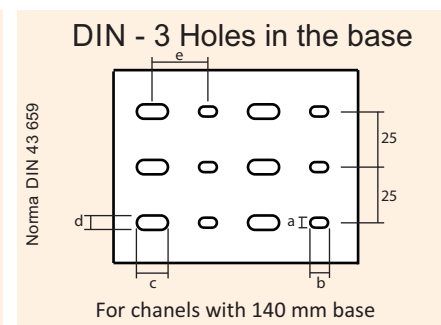
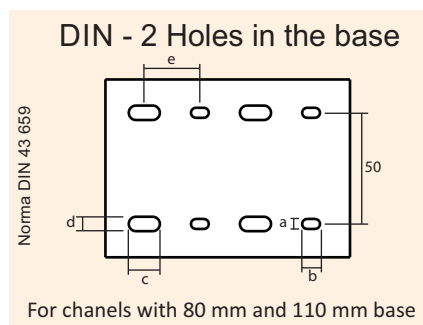
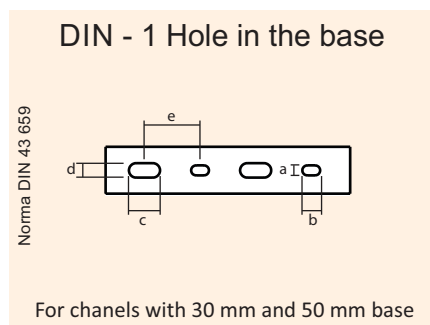
Code	Measures (mm)				
Open cut	s	a	b	c	d
DND 30 ___		24	7	4,3	6,7
DND 35 ___		24	7	4,3	6,7
DND 50 ___	•	40	10	6	9
DND 80 ___	•		12	6	9



Code	Measure (mm)				
Hole base	a	b	c	d	e
DIN	4,5	8	14	6,5	25



Drilling in the base on demand.
Ex: DNC 50030 820 DIN



Coments:

- DNE opening type, only in lighth gray.
- Supply standard is in 2 meters bars, without drilling in the base
- On demand:
 - Anothers lenghts.
 - Drilling in the base like DIN 43659
 - Adhesive in the base.

Colors

	White (960)		Beige (410)
	Light gray (820)		Light blue (620)
	Medium gray (860)		Petroleum blue (660)
	Dark gray (880) (standard)		

The floor conductor AP, was developed for passing wires and cables on the floor or baseboard. The floor conductor AP can have one or two separate compartments that can be used one for power cables and the other for telephone or data cables.

Floor conductor is supplied in 2 or 4 meter bars.

Technical specifications:

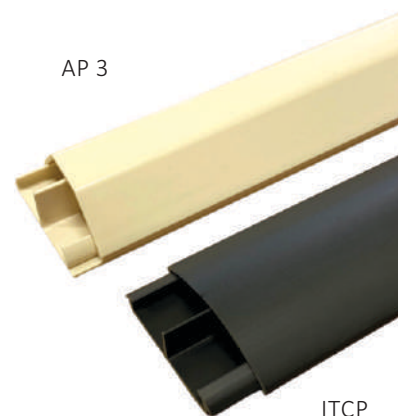
Material: Hard PVC
The material complies with Directive 2002/95/EC-RoHS

Certificate: RoHS

Self-extinguishing: UL94-V0

Work temperature: -30°C to +60°C

Softening point: VICAT, 80°C (ASTM 1525).



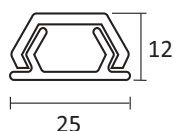
Code	Color			Max package (m)	
	Beige (410)	Light Gray (820)	Dark Gray (880)	Big	Small

AP 1 ___	•	•		-	80
AP 2 ___	•	•		-	50
AP 3 ___	•	•		100	-
AP 4 ___	•	•		-	80
AP 5 ___	•		•	-	40
ITCP 1350			•	-	40

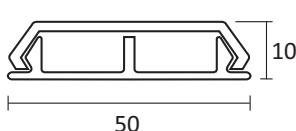
Colors Beige (410) Light Gray (820) Dark Gray (880)

Example: AP 2 410

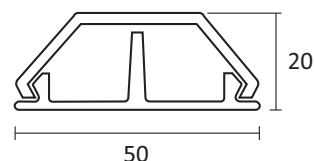
Tipo AP 1



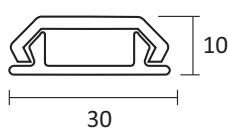
Tipo AP 2



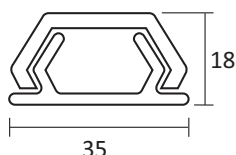
Tipo AP 3



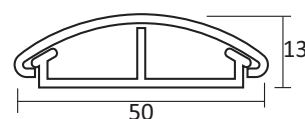
Tipo AP 4



Tipo AP 5



ITCP 1350



This cover is designed to close openings for DIN standard circuit breakers in panel electric, offering a better finish.

The design of the clamping jaws ensures easy and firm mounting with the breakers.

Technical specifications:

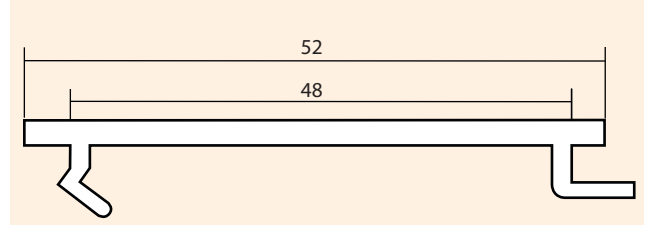
Material: Hard PVC
The material complies with Directive 2002/95/EC-RoHS

Certificate: RoHS

Self-extinguishing: UL94-V0

Work temperature: -30°C to +60°C

Softening point: VICAT, 80°C (ASTM 1525).

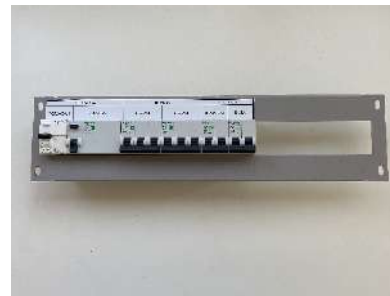


Code	Description	Bars
TFD DIN	Breaker hole cover DIN	1 Meter

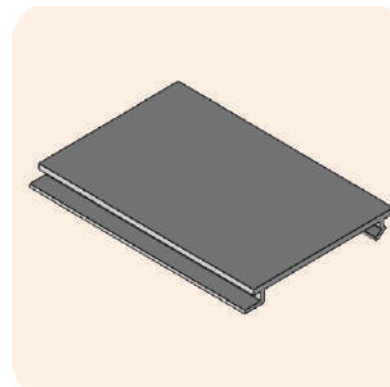
Color: Gray



With Breaker hole cover DIN



Without Breaker hole cover DIN



The Dino channel was developed to organize wire and cables in electrical panel doors, due to flexibility.

The design makes it easy to insert and remove wires and cables inside the Dino channel, without the need to open the covers as with conventional channels.

Can be attached with 3M double-sided tape in applications where you do not want to drill holes.

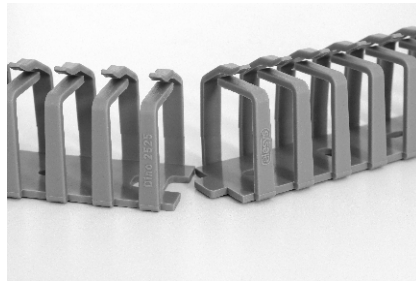
Technical specifications:

Material: Polypropylene
 Adhesive: Acrylic
 Certificate: Halogen Free, RoHS
 Self-extinguishing: Norma UL94-V0
 Work temperature: -10°C to +80°C



Code	Description	Pack
DINO 2525	Dino channel 25x25mm.	8 Bars
DINO 2525A	Dino channel 25x25mm with acrylic adhesive for fixation.	8 Bars

Color:  Gray



ES spirals are intended to hold a group of cables or pneumatic tubes. Are indicated in panels doors or where is necessity to keep safe cables movimentation.

They are manufactured in several colors, as indicated below, with the option of being self-extinguishing (anti-flame). On demand.

The self-extinguishing option is not available for the Semitransparent spiral (060)

Technical specifications:







Material:	Polyethylene
Certificate:	RoHS, Halogen Free
Work temperature:	-40°C to +80°C
Self-extinguishing:	UL94-V0 (optional)



Code	Inches	Measures (mm)			Max package (m)
		Ø External (b)	Ø Internal (a)	Step (c)	
ES 04 ___ 890	(5/32")	4	3,1	4	50
ES 06 ___ 890	(1/4")	6	3,7	6	50
ES 08 ___ 890	(5/16")	8	5,8	8	50
ES 10 ___ 890	(3/8")	10	7,7	10	50
ES 12 ___ 890	(½")	12	8,4	12	50
ES 18 ___ 890	(¾")	18	12,3	18	25
ES 24 ___ 890	(1")	24	18	24	20

Minimum quantity: One box.

Colors:

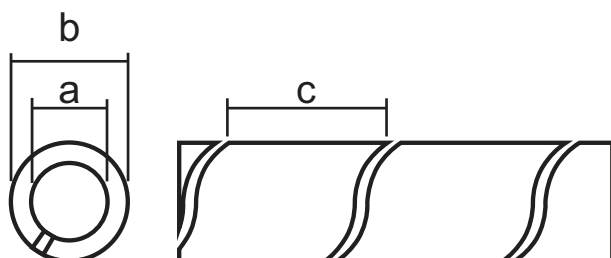
 White (960)	 Yellow (460)	 Gray (860)	 Semi-transparent (060)
 Blue (660)	 Orange (360)	 Black (160)	

OBSERVATIONS:

To specificate the colors, add the numbers on the code Example: ES 04 660 890

To self-extinguishing, add the word in the end off the code

Example: ES 04 660 890 self-extinguishing.



The braided sleeving mesh MTE is a mesh expandable tube.

polyester monofilaments in black, flame retardant and with abrasion resistance.

This tube keeps the wires grouped and organized, in a "U" shape that connects the panel with the corresponding door, allowing you to open and close the door, keeping the wires organized and grouped.

It can also be used for bundling pneumatic tubes for the same purpose as above

Technical specifications:

Material:	Monofilament polyestere
Certificate:	RoHS, Halogen Free
Work temperature:	-50°C to +150°C
Self-extinguishing:	UL94-V0



Code	Ø Mínimum (mm)	Ø Max (mm)	Max package (m)
MTE-P05-VO	03	09	100
MTE-P10-VO	07	19	100
MTE-P15-VO	10	27	50
MTE-P20-VO	14	30	50
MTE-P25-VO	18	35	50
MTE-P30-VO	20	50	50
MTE-P40-VO	30	60	50
MTE-P50-VO	40	80	25
MTE-P64-VO	45	105	25

Minimum quantity: One box.

Braided Sleeving manual cut tool

Code	Description
CM 8	Manual cut tool with heat blad, 220V ca 60Hz
CM 8F	Blade for manual cut tool CM 8
CMM 9	Table manual cut tool with heat blade, 220V ca 60Hz
CMM 9F	Blade for manual cut tool CMM 9



The cable fix FC has the purpose of organizing, fixing and distancing the cables in the panel feeders and switchboards, allowing greater safety in case of short circuit, limiting the movement of cables.

For its installation, the cable fix FC needs to use the TR trill.

Technical specifications:

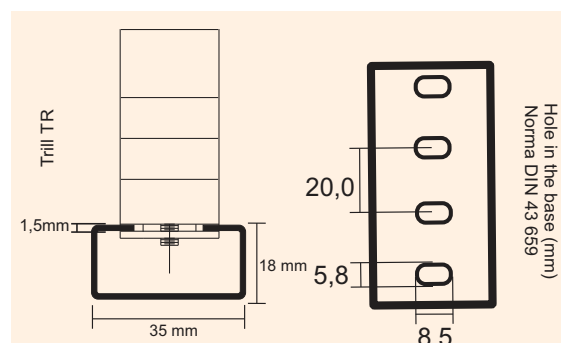
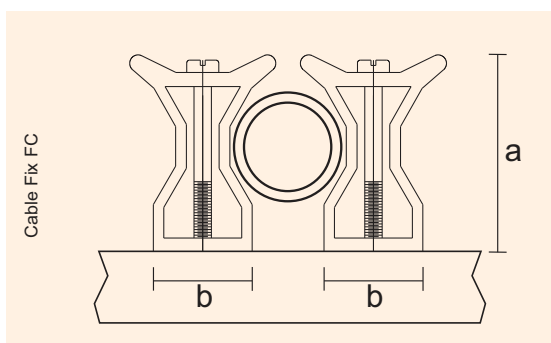
Material: ABS (FC)
Polyamide (STR)
Certificate: RoHS
Self-extinguishing: UL94-V0
Work temperature: -20°C to +80°C



Code	Measure (mm)		For cables (Ø Exerno mm)
	a	b	
FC 1	23	18	10 to 23
FC 2	35	23	17 to 36
FC 3	55	28	27 to 45
TR	18	35	Bar 1,5 m

Colors: Black.

Coments: The TR trill geometry does not allow the installation of terminal blocks. Profile in bichromated galvanized steel, layer 30 µm, in format "C", perforated at the base to facilitate the fixation. Supplied in 1.5 m bars.



Cable fix with adhesive and tie

Code	Description	Pack
STR 25x32	Cable fix with clamp adhesive 25x32 mm, Polyamide V0.	100 units



Clamp not includes